

# KS SERIES - VERTICAL INSTALLATION

CS-DS-01-KSV	CS DISCLAIMER
CS-PJ-01-KSV	KS42SL EXPANDED PANEL JOINT
CS-PJ-02-KSV	KS42SL ENGAGED PANEL JOINT
CS-PJ-03-KSV	KS45SL EXPANDED PANEL JOINT
CS-PJ-04-KSV	KS45SL ENGAGED PANEL JOINT
CS-PJ-05-KSV	INTERMEDIATE SUPPORT
CS-PJ-06-KSV	INTERMEDIATE SUPPORT - SLIP CONNECTION
CS-PJ-07-KSV	LINER PANEL TO CONCRETE WITH SUPPORT
CS-PJ-08-KSV	LINER PANEL TO CONCRETE
CS-BS-01-KSV	BASE DETAIL - INSULATED SLAB HEAVY GAUGE ANGLE
CS-BS-02-KSV	BASE DETAIL - INSULATED SLAB LIGHT GAUGE Z
CS-BS-03-KSV	BASE DETAIL - PARTITION W/ FLOOR INSULATION
CS-BS-04-KSV	BASE DETAIL - INSULATED/NON-INSULATED
CS-BS-05-KSV	BASE DETAIL - PART. W/ CURBS INSULATED
CS-BS-06-KSV	BASE DETAIL - PART. NON-INSULATED
CS-BS-07-KSV	BASE DETAIL - LINER PANEL
CS-BS-08-KSV	BASE DETAIL - PART. W/ CURBS NON-INSULATED
CS-BS-09-KSV	BASE DETAIL - PART. W/ CURBS (ALTERNATE)
CS-BS-10-KSV	PARTITION BASE ON TOP OF CURB
CS-OC-01-KSV	OUTSIDE CORNER - FLUSH TRIM
CS-OC-02-KSV	OUTSIDE CORNER AT PARTITION
CS-OC-03-KSV	OUTSIDE CORNER LINER PANEL AT CONC WALL

INDEX SHEET

DETAIL #: CS-XX-XX-KSV

DATE: 7/26/11



[www.kingspanpanels.us](http://www.kingspanpanels.us)  
[www.kingspanpanels.ca](http://www.kingspanpanels.ca)

# KS SERIES - VERTICAL INSTALLATION

CS-IC-01-KSV	INSIDE CORNER - FLUSH TRIM
CS-IC-02-KSV	PARTITION TO EXTERIOR WALL
CS-FO-01-KSV	HEADER CONDITION
CS-FO-02-KSV	JAMB CONDITION
CS-ST-01-KSV	STACK JOINT
CS-RK-01-KSV	RAKE
CS-RK-02-KSV	RAKE W/ MEMBRANE ROOF
CS-EV-01-KSV	LOW EAVE
CS-CE-01-KSV	INTERIOR WALL TO CEILING
CS-CE-02-KSV	INTERIOR WALL TO CEILING - 'T' SECTION
CS-CE-03-KSV	CEILING CHANNEL
CS-CE-04-KSV	CEILING TEE
CS-CE-05-KSV	CEILING TEE ASSEMBLY
CS-CE-06-KSV	CEILING CHANNEL ASSEMBLY
CS-CE-07-KSV	CEILING TO WALL - LONGITUDINAL
CS-CE-08-KSV	CEILING TO WALL - TRANSVERSE
CS-CE-09-KSV	PARTITION TO ROOF
CS-CE-10-KSV	PARTITION TO ROOF WITH BLOCKING
CS-TL-01-KSV	TRIM END LAP
CS-TL-02-KSV	TRIM LAP WITH HEM
CS-TL-03-KSV	TRIM END LAP WITH LAP STRIP
CS-TL-04-KSV	TRIM LAP AT FRAMED OPENING

INDEX SHEET

DETAIL #: CS-XX-XX-KSV

DATE: 7/26/11



[www.kingspanpanels.us](http://www.kingspanpanels.us)  
[www.kingspanpanels.ca](http://www.kingspanpanels.ca)

# KS SERIES - VERTICAL INSTALLATION

## DISCLAIMERS:

THESE DETAILS ARE PROVIDED AS A GUIDELINE FOR PROPER PANEL AND ASSOCIATED COMPONENT INSTALLATION, AND ARE BASED ON INDUSTRY ACCEPTED PRACTICES.

REFRIGERATION EQUIPMENT IN COMBINATION WITH THE TEMPERATURE DIFFERENTIAL BETWEEN BUILDING EXTERIOR AND INTERIOR CAN CREATE NEGATIVE AIR PRESSURE WITHIN THE BUILDING (WARM AIR FROM OUTSIDE THE BUILDING IS DRAWN INTO THE BUILDING THROUGH AIR LEAKS IN THE BUILDING ENVELOPE). AS A RESULT, VAPOR SEALS ARE OF PRIMARY CONCERN TO PROPER COLD STORAGE PERFORMANCE. IN GENERAL, COLD STORAGE FACILITIES REQUIRE THE PRIMARY VAPOR BARRIER TO BE ON THE EXTERIOR (I.E. "WARM" SIDE), RATHER THAN INTERIOR SIDE OF THE PANEL.

PROJECTS LOCATED IN AREAS SUBJECT TO EXTREME COLD AND/OR HIGH SNOW LOADS MAY REQUIRE MODIFICATIONS TO THESE DETAILS - CONTACT KINGSPAN TECHNICAL SERVICES FOR SPECIFIC PROJECT RECOMMENDATIONS.

ALL STRUCTURAL SUPPORTS ARE NOT BY KINGSPAN AND ARE SHOWN FOR CLARIFICATION AND ILLUSTRATION PURPOSES ONLY.

CONTACT KINGSPAN TECHNICAL SERVICES FOR MAXIMUM ALLOWABLE PANEL SPANS AND FASTENING PATTERNS.

ALL SEALANTS TO BE COMPATIBLE WITH VAPOR BARRIERS AS SHOWN

**COLD STORAGE  
DISCLAIMER**

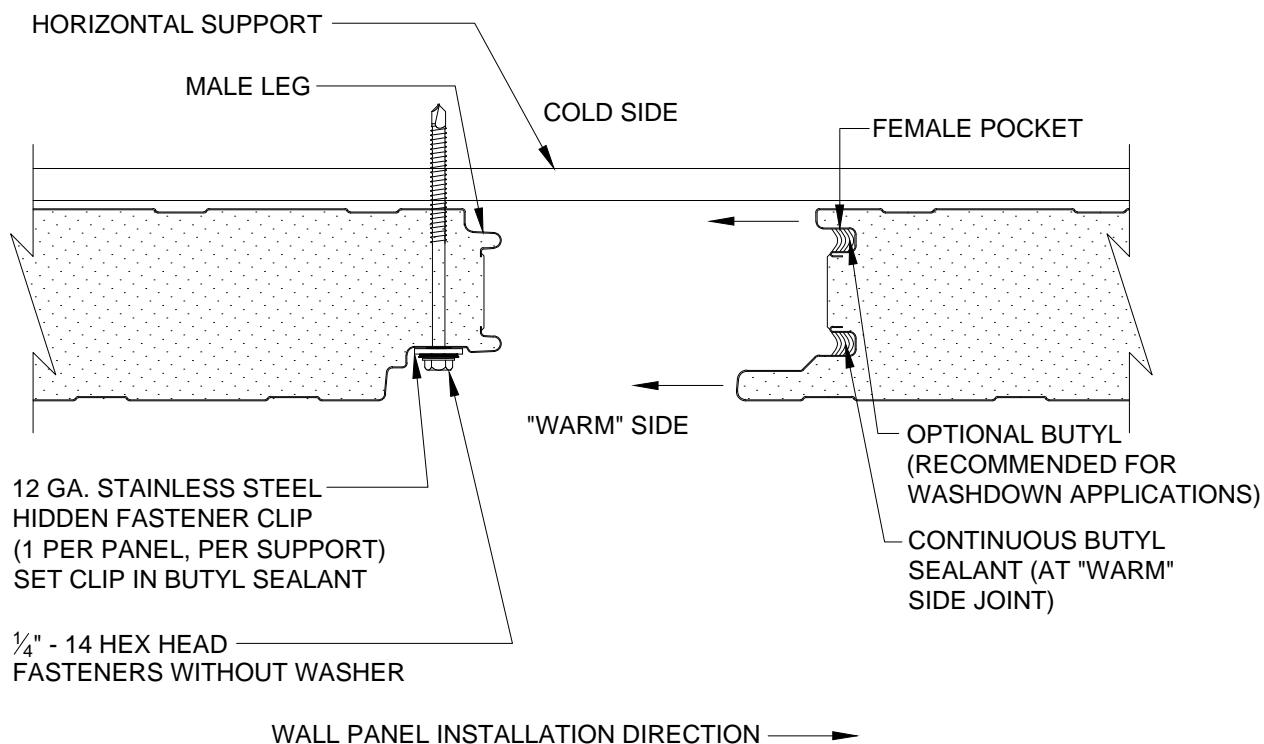
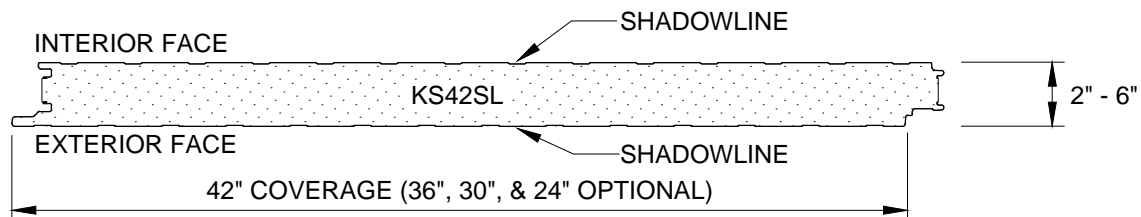
DETAIL #: CS-DS-01-KSV

DATE: 7/26/11



[www.kingspanpanels.us](http://www.kingspanpanels.us)  
[www.kingspanpanels.ca](http://www.kingspanpanels.ca)

# KS SERIES - VERTICAL INSTALLATION



NOTE: FILL FEMALE POCKET(S) 3/4 FULL WITH SEALANT TO PROVIDE PROPER AIR/WATER SEAL

**KS42SL**  
**EXPANDED JOINT**

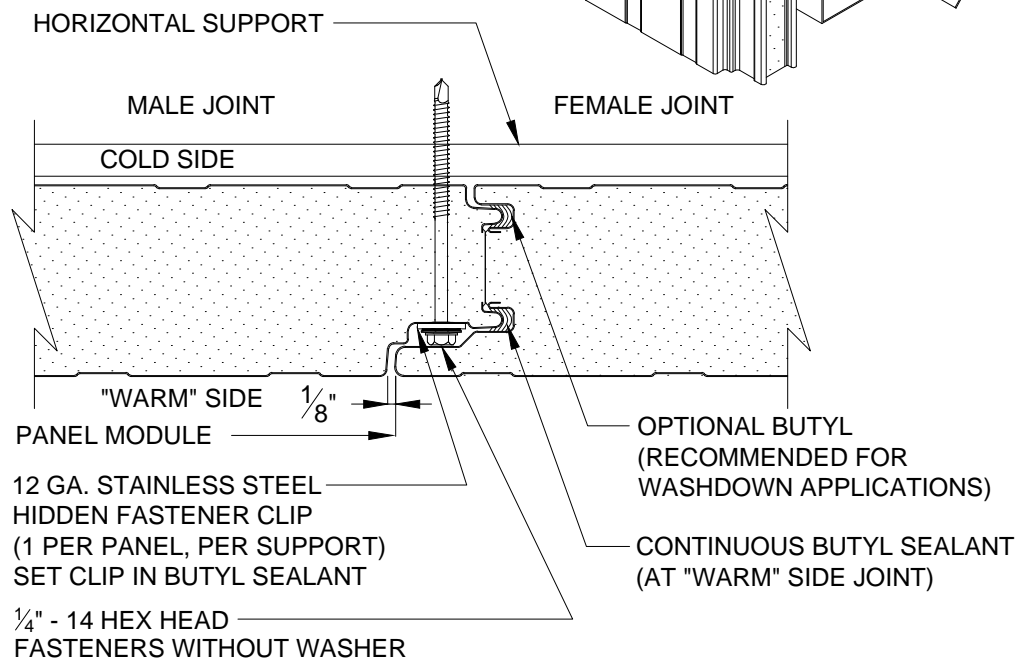
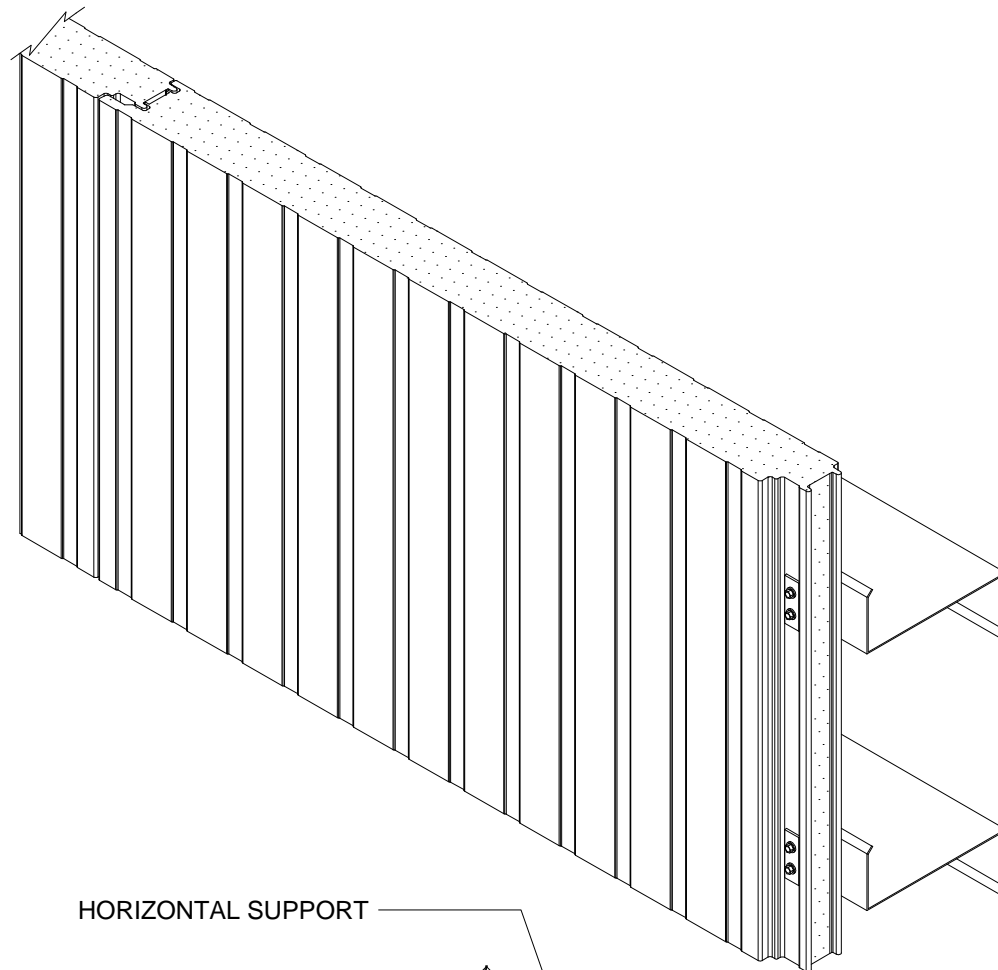
DETAIL #: CS-PJ-01-KSV

DATE: 7/26/11

**Kingspan**  
Insulated Panels

[www.kingspanpanels.us](http://www.kingspanpanels.us)  
[www.kingspanpanels.ca](http://www.kingspanpanels.ca)

# KS SERIES - VERTICAL INSTALLATION



WALL PANEL INSTALLATION DIRECTION →

**KS42SL**  
**ENGAGED JOINT**

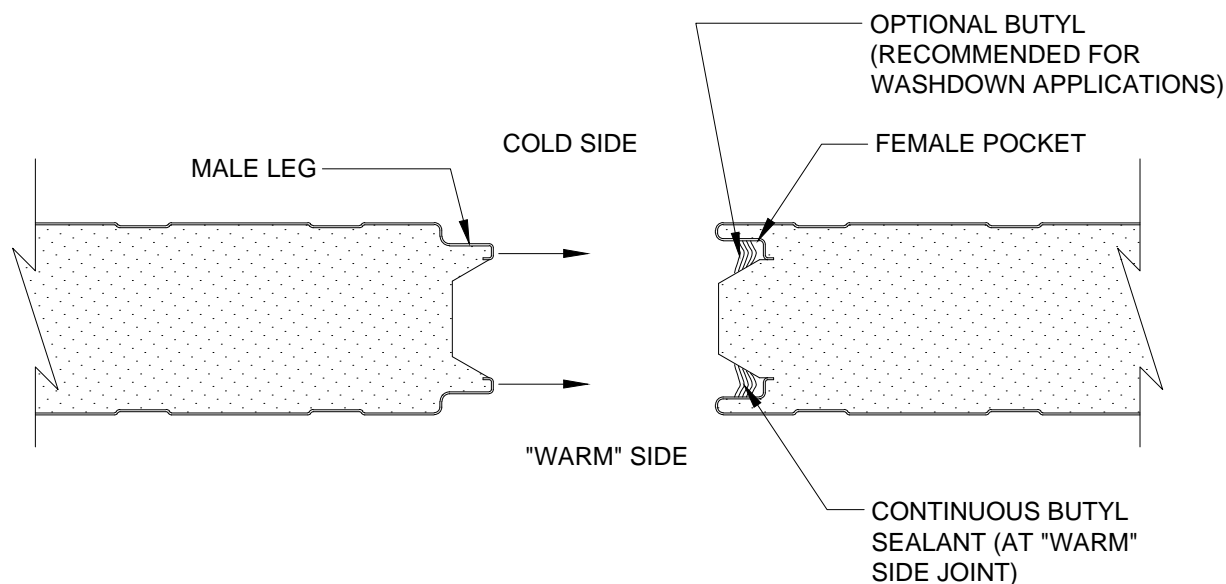
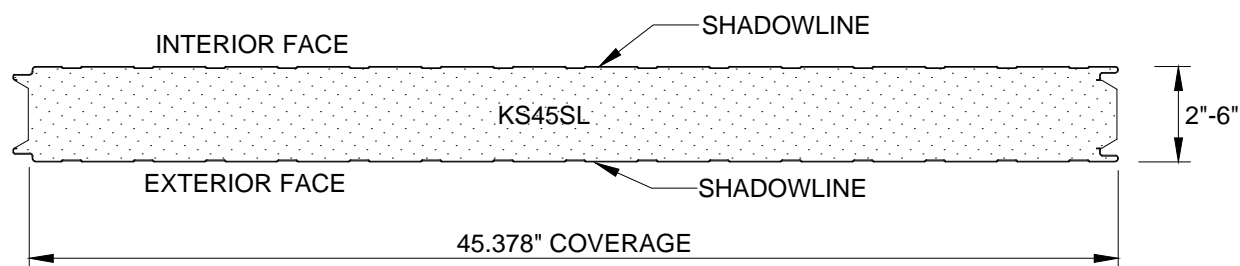
DETAIL #: CS-PJ-02-KSV

DATE: 7/26/11



[www.kingspanpanels.us](http://www.kingspanpanels.us)  
[www.kingspanpanels.ca](http://www.kingspanpanels.ca)

# KS SERIES - VERTICAL INSTALLATION



WALL PANEL INSTALLATION DIRECTION →

NOTE: FILL FEMALE POCKET(S) 3/4 FULL WITH SEALANT TO PROVIDE PROPER AIR/WATER SEAL

**KS45SL  
EXPANDED JOINT**

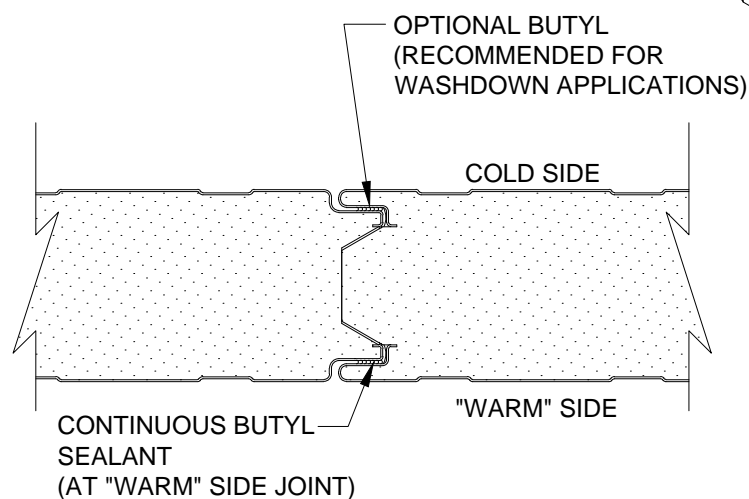
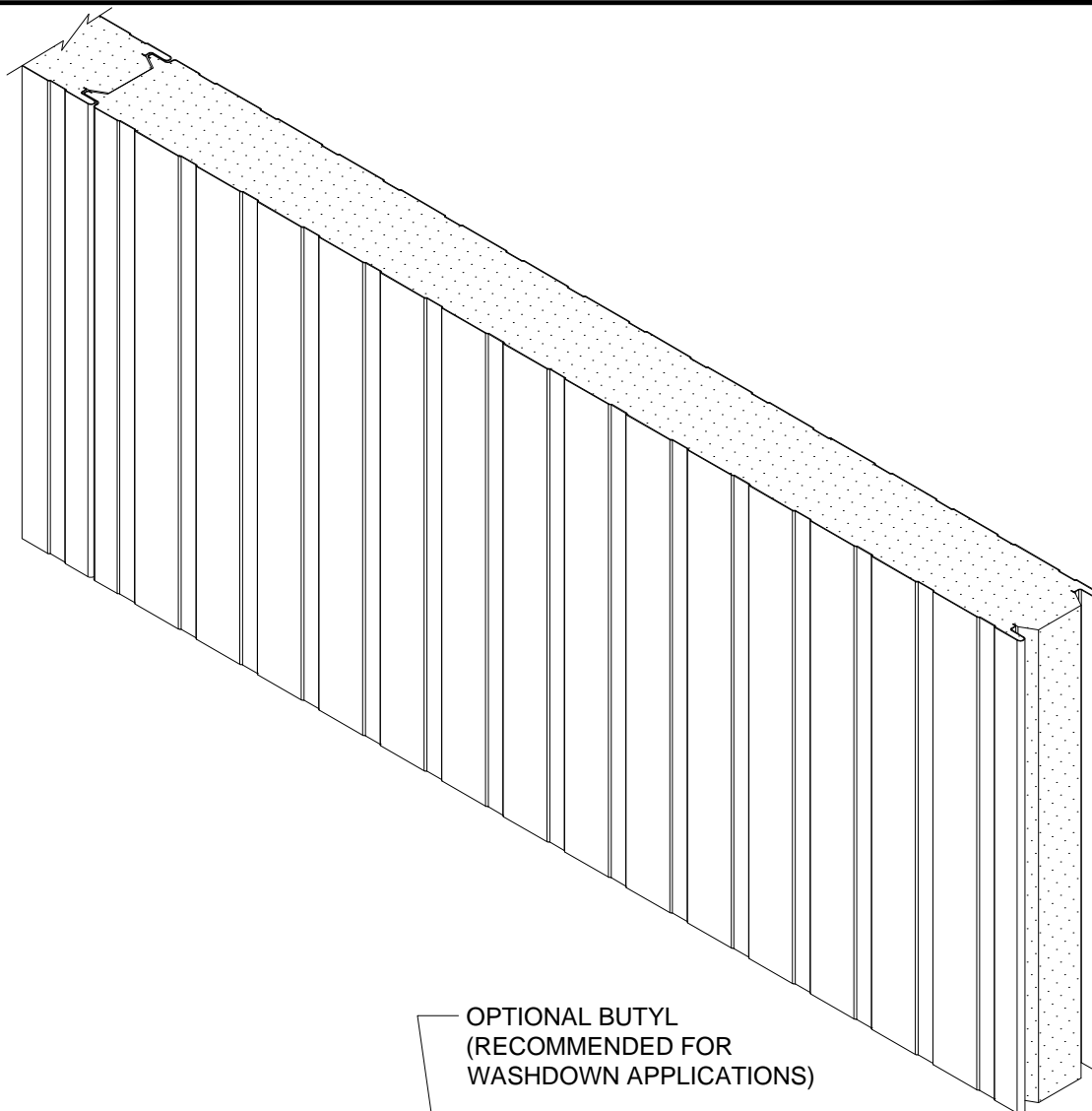
DETAIL #: CS-PJ-03-KSV

DATE: 7/26/11

**Kingspan**  
Insulated Panels

[www.kingspanpanels.us](http://www.kingspanpanels.us)  
[www.kingspanpanels.ca](http://www.kingspanpanels.ca)

# KS SERIES - VERTICAL INSTALLATION



WALL PANEL INSTALLATION DIRECTION →

**KS45SL  
ENGAGED JOINT**

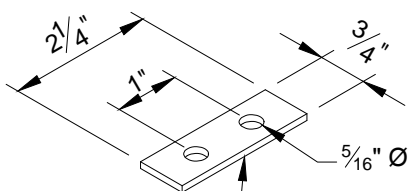
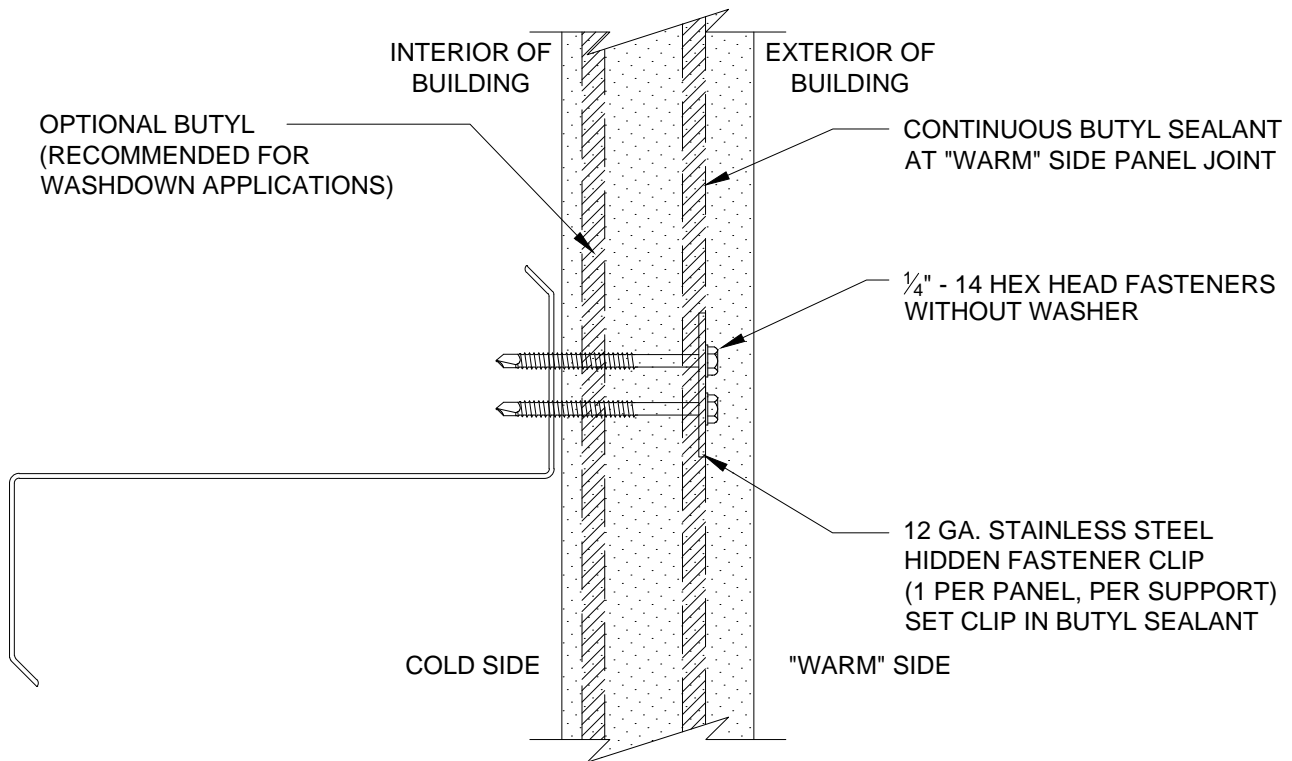
DETAIL #: CS-PJ-04-KSV

DATE: 7/26/11

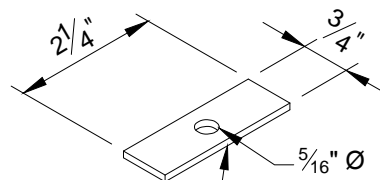
  
**Kingspan**  
Insulated Panels

[www.kingspanpanels.us](http://www.kingspanpanels.us)  
[www.kingspanpanels.ca](http://www.kingspanpanels.ca)

# KS SERIES - VERTICAL INSTALLATION



STANDARD:  
12 GA. STAINLESS STEEL  
TWO-HOLE HIDDEN FASTENER CLIP



OPTIONAL:  
12 GA. STAINLESS STEEL  
ONE-HOLE HIDDEN FASTENER CLIP

NOTE:  
CONTACT KINGSPAN TECHNICAL SERVICES  
FOR SPECIFIC PROJECT RECOMMENDATIONS

INTERMEDIATE  
SUPPORT

DETAIL #: CS-PJ-05-KSV

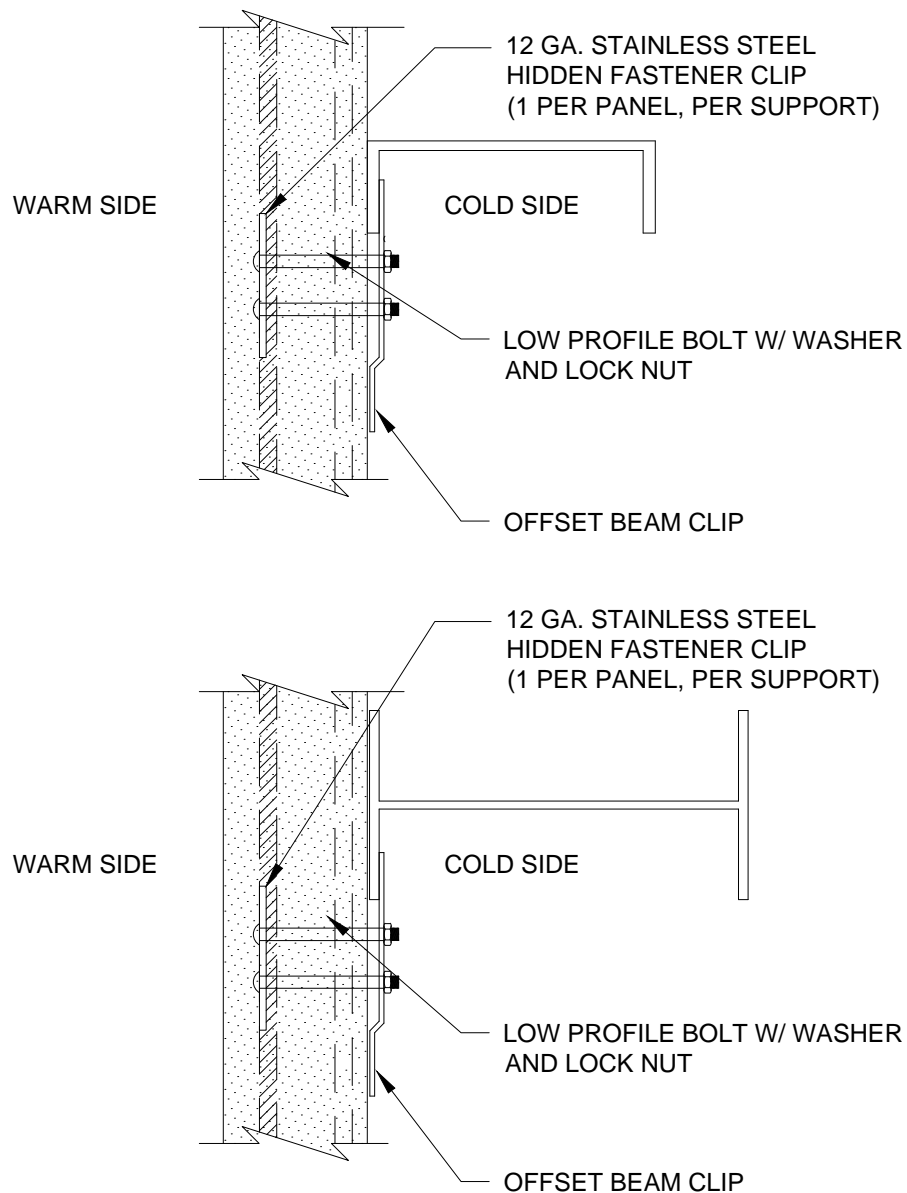
DATE: 7/26/11

  
**Kingspan**  
Insulated Panels

[www.kingspanpanels.us](http://www.kingspanpanels.us)  
[www.kingspanpanels.ca](http://www.kingspanpanels.ca)



# KS SERIES - VERTICAL INSTALLATION



NOTE: BEAM CLIP TO ALLOW STRUCTURAL STEEL TO DEFLECT W/O PUTTING VERTICAL LOAD INTO WALL PANEL.

CONTACT KINGSPAN TECHNICAL SERVICES FOR ADDITIONAL INFO

**INTERMEDIATE  
SUPPORT - SLIP  
CONNECTION**

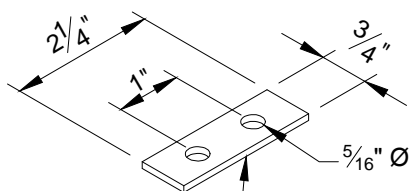
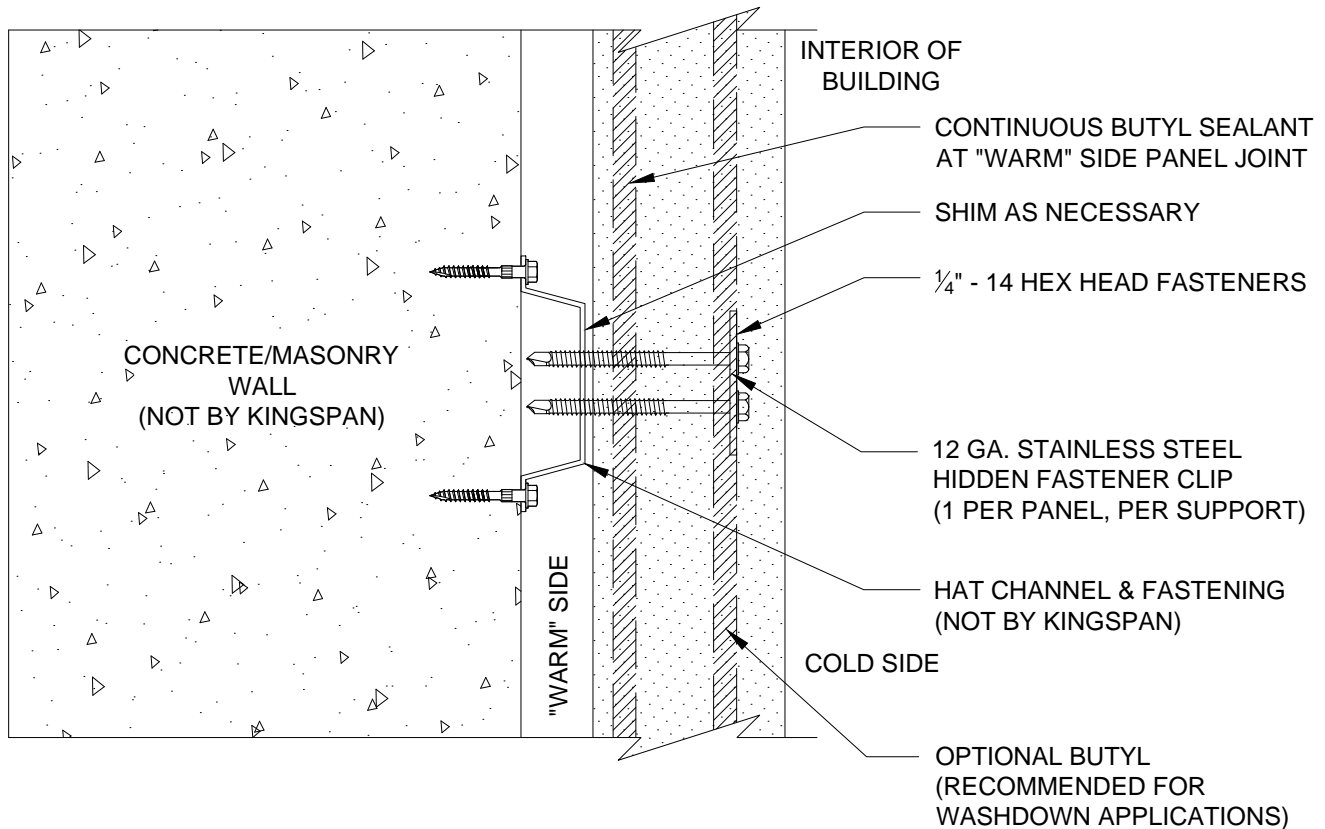
DETAIL #: CS-PJ-06-KSV

DATE: 7/26/11

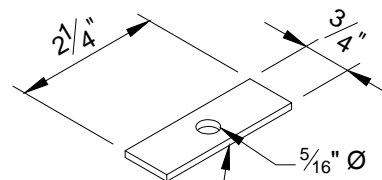
**Kingspan**  
Insulated Panels

[www.kingspanpanels.us](http://www.kingspanpanels.us)  
[www.kingspanpanels.ca](http://www.kingspanpanels.ca)

# KS SERIES - VERTICAL INSTALLATION



STANDARD:  
12 GA. STAINLESS STEEL  
TWO-HOLE HIDDEN FASTENER CLIP



OPTIONAL:  
12 GA. STAINLESS STEEL  
ONE-HOLE HIDDEN FASTENER CLIP

NOTE:  
CONTACT KINGSPAN TECHNICAL SERVICES  
FOR SPECIFIC PROJECT RECOMMENDATIONS

**LINER PANEL TO  
CONCRETE WITH  
SUPPORT**

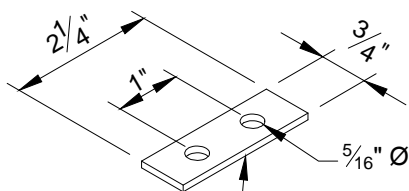
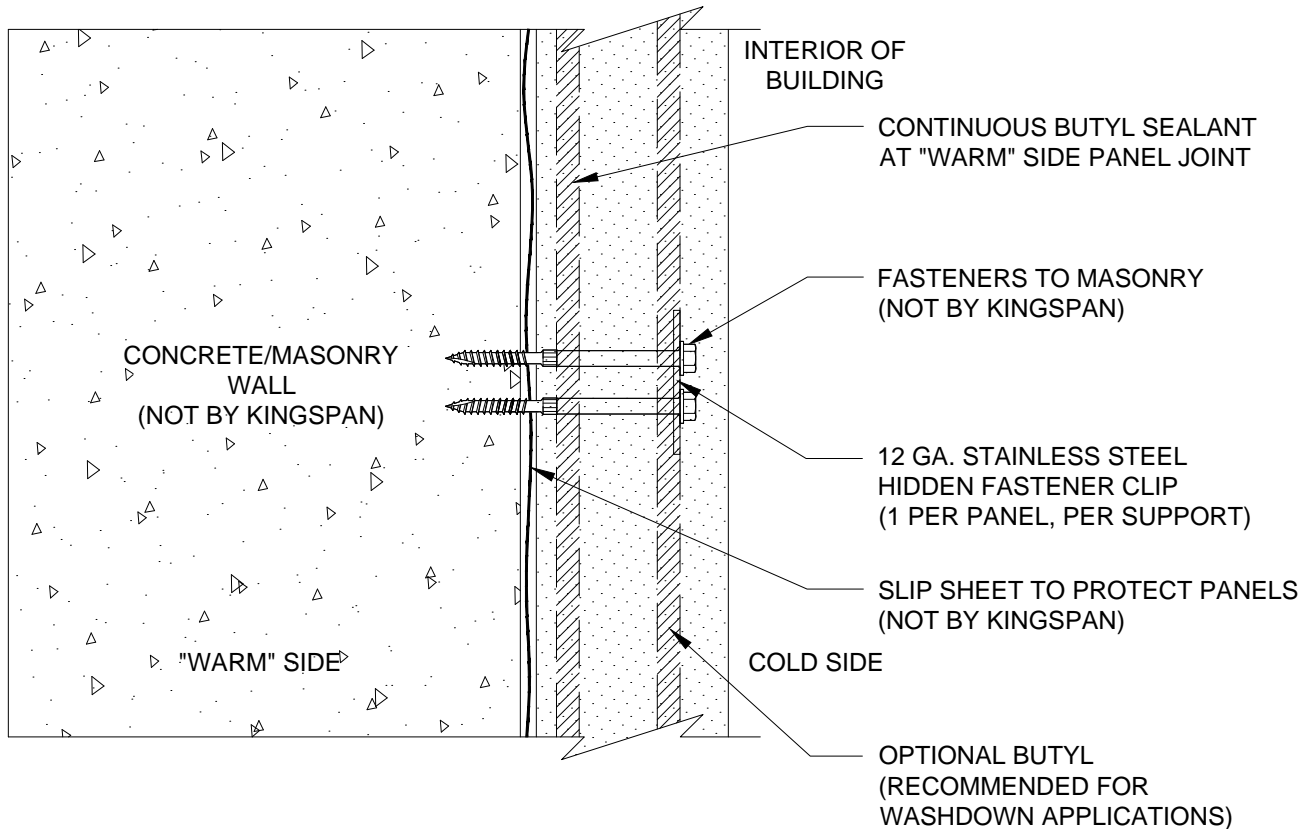
DETAIL #: CS-PJ-07-KSV

DATE: 7/26/11

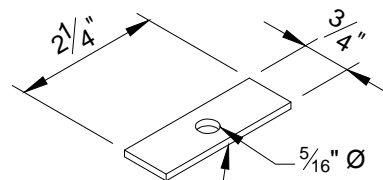


[www.kingspanpanels.us](http://www.kingspanpanels.us)  
[www.kingspanpanels.ca](http://www.kingspanpanels.ca)

# KS SERIES - VERTICAL INSTALLATION



STANDARD:  
12 GA. STAINLESS STEEL  
TWO-HOLE HIDDEN FASTENER CLIP



OPTIONAL:  
12 GA. STAINLESS STEEL  
ONE-HOLE HIDDEN FASTENER CLIP

NOTE:  
CONTACT KINGSPAN TECHNICAL SERVICES  
FOR SPECIFIC PROJECT RECOMMENDATIONS

LINER PANEL TO  
CONCRETE

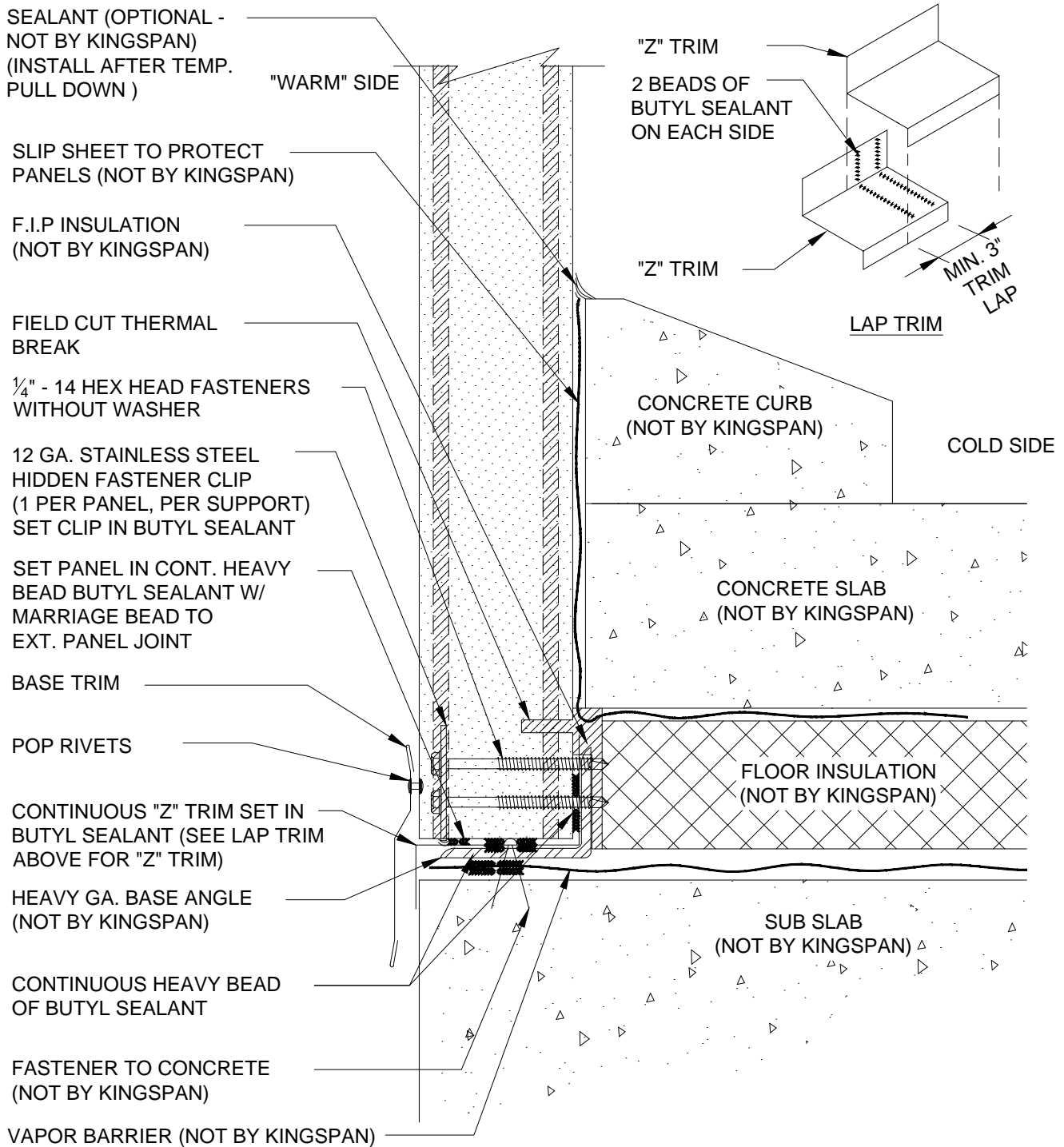
DETAIL #: CS-PJ-08-KSV

DATE: 7/26/11

**Kingspan**  
Insulated Panels

[www.kingspanpanels.us](http://www.kingspanpanels.us)  
[www.kingspanpanels.ca](http://www.kingspanpanels.ca)

# KS SERIES - VERTICAL INSTALLATION



- NOTES: 1) BASE ANGLE MUST BE FASTENED SECURELY TO SLAB TO RESIST LATERAL LOAD APPLIED BY PANEL  
2) BASE ANGLE GAUGE TO BE DETERMINED BY PROJECT ENGINEER OF RECORD  
3) FLOOR INSULATION REQUIRED FOR FREEZER APPLICATIONS

## BASE DETAIL - INSULATED SLAB HEAVY GAUGE ANGLE

DETAIL #: CS-BS-01-KSV

DATE: 7/26/11



www.kingspanpanels.us  
www.kingspanpanels.ca

# KS SERIES - VERTICAL INSTALLATION

SEALANT (OPTIONAL -  
NOT BY KINGSPAN)  
(INSTALL AFTER TEMP.  
PULL DOWN)

SLIP SHEET TO PROTECT  
PANELS (NOT BY KINGSPAN)

F.I.P INSULATION  
(NOT BY KINGSPAN)

FIELD CUT THERMAL  
BREAK

1/4" - 14 HEX HEAD FASTENERS  
WITHOUT WASHER

12 GA. STAINLESS STEEL  
HIDDEN FASTENER CLIP  
(1 PER PANEL, PER SUPPORT)  
SET CLIP IN BUTYL SEALANT

SET PANEL IN CONT. HEAVY  
BEAD BUTYL SEALANT W/  
MARRIAGE BEAD TO  
EXT. PANEL JOINT

BASE TRIM

POP RIVETS

"Z" SHAPED BASE ANGLE  
(NOT BY KINGSPAN)

"WARM" SIDE

CONTINUOUS HEAVY BEAD  
OF BUTYL SEALANT

FASTENER TO CONCRETE  
(NOT BY KINGSPAN)

VAPOR BARRIER (NOT BY KINGSPAN)

LAP TRIM

2 BEADS OF  
BUTYL SEALANT  
ON EACH SIDE

"Z" ANGLE

LAP TRIM

3" 3"  
END END  
LAP LAP

CONCRETE CURB  
(NOT BY KINGSPAN)

COLD SIDE

CONCRETE SLAB  
(NOT BY KINGSPAN)

FLOOR INSULATION  
(NOT BY KINGSPAN)

SUB SLAB  
(NOT BY KINGSPAN)

SEE LAP TRIM ABOVE FOR "Z" BASE ANGLE

- NOTES: 1) BASE ANGLE MUST BE FASTENED SECURELY TO SLAB TO RESIST LATERAL LOAD APPLIED BY PANEL  
2) Z SHAPED BASE ANGLE GAUGE TO BE DETERMINED BY PROJECT ENGINEER OF RECORD  
3) FLOOR INSULATION REQUIRED FOR FREEZER APPLICATIONS

**BASE DETAIL -  
INSULATED SLAB  
LIGHT GAUGE Z**

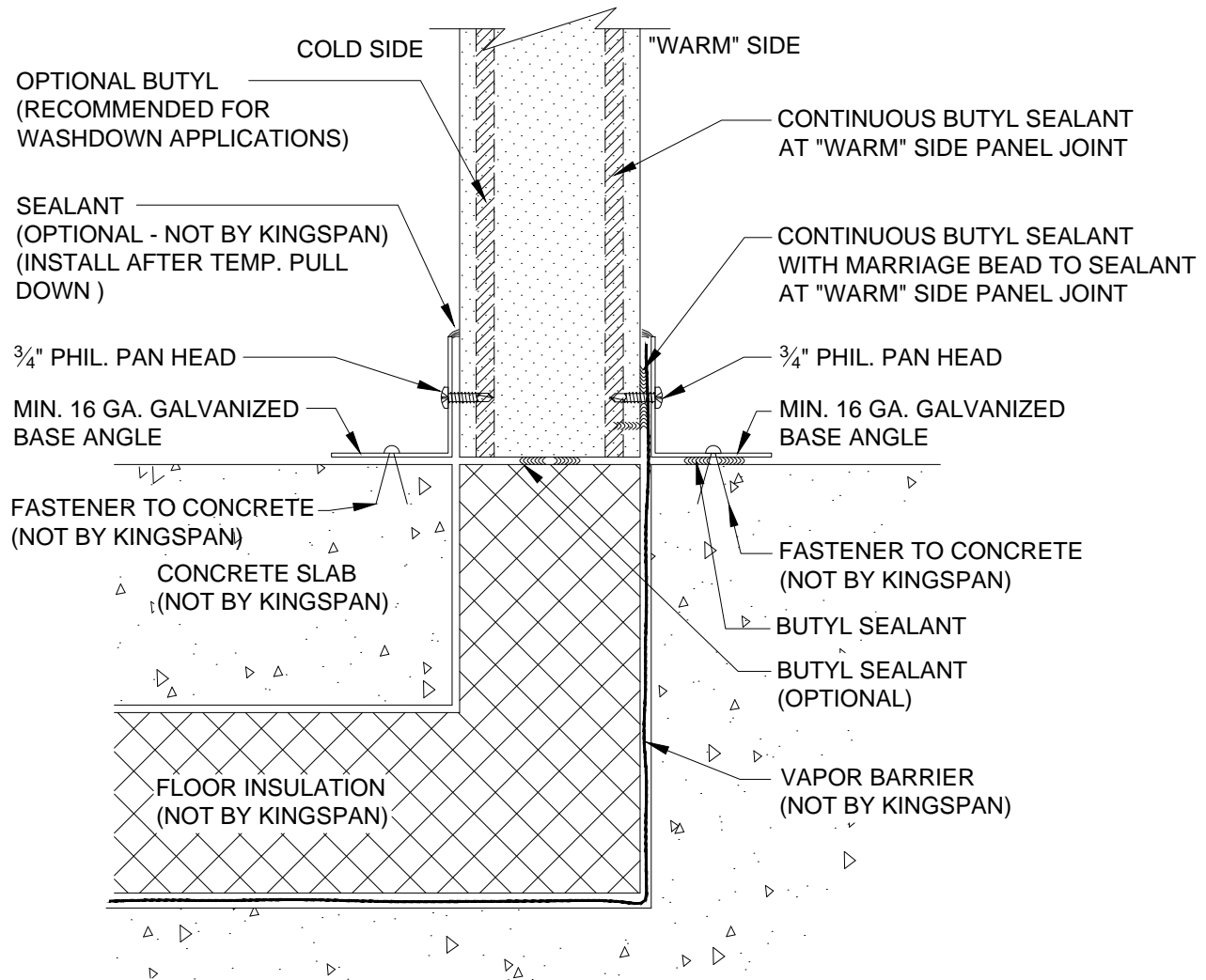
DETAIL #: CS-BS-02-KSV

DATE: 7/26/11

**Kingspan**  
Insulated Panels

[www.kingspanpanels.us](http://www.kingspanpanels.us)  
[www.kingspanpanels.ca](http://www.kingspanpanels.ca)

# KS SERIES - VERTICAL INSTALLATION



BASE DETAIL -  
PARTITION W/ FLOOR  
INSULATION

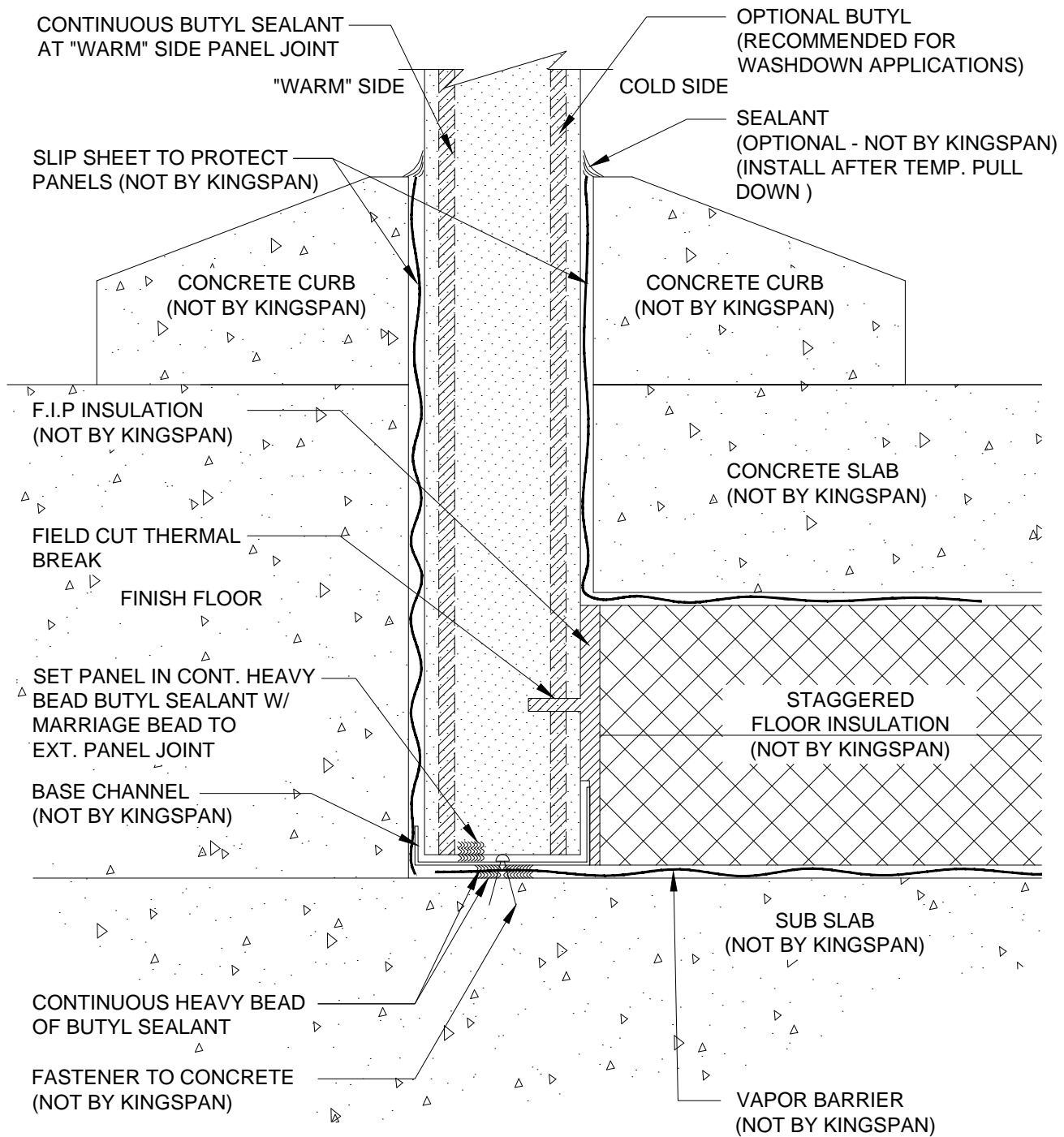
DETAIL #: CS-BS-03-KSV

DATE: 7/26/11

**Kingspan**  
Insulated Panels

[www.kingspanpanels.us](http://www.kingspanpanels.us)  
[www.kingspanpanels.ca](http://www.kingspanpanels.ca)

# KS SERIES - VERTICAL INSTALLATION



NOTES: 1) BASE CHANNEL MUST BE FASTENED SECURELY TO SLAB

2) ANGLE IRON MAY BE USED IN LIEU OF CHANNEL

**BASE DETAIL -  
INSULATED/  
NON-INSULATED FLOOR**

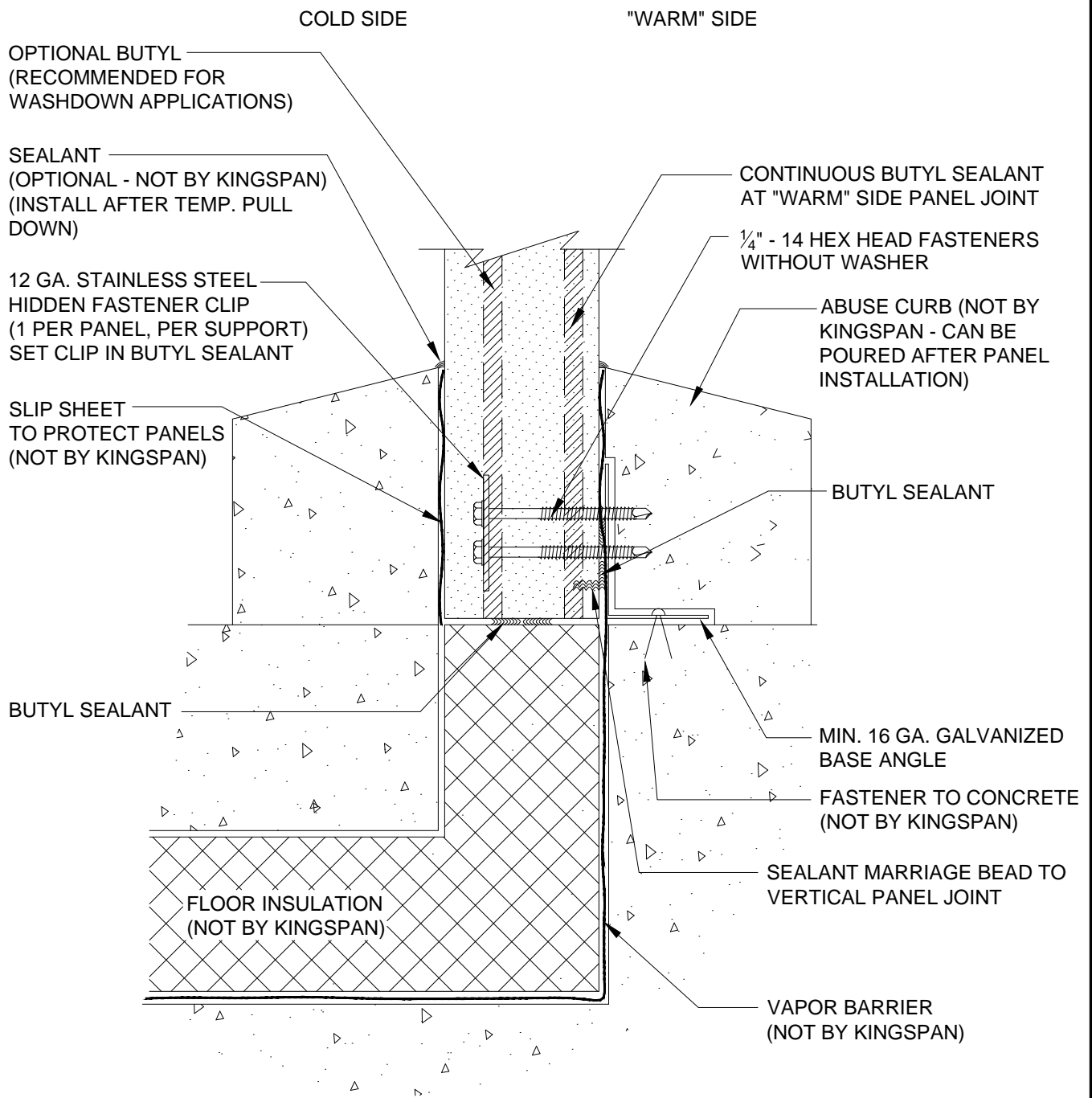
DETAIL #: CS-BS-04-KSV

DATE: 7/26/11

**Kingspan**  
Insulated Panels

[www.kingspanpanels.us](http://www.kingspanpanels.us)  
[www.kingspanpanels.ca](http://www.kingspanpanels.ca)

# KS SERIES - VERTICAL INSTALLATION



**BASE DETAIL -  
PARTITION W/ CURBS  
INSULATED FLOOR**

DETAIL #: CS-BS-05-KSV

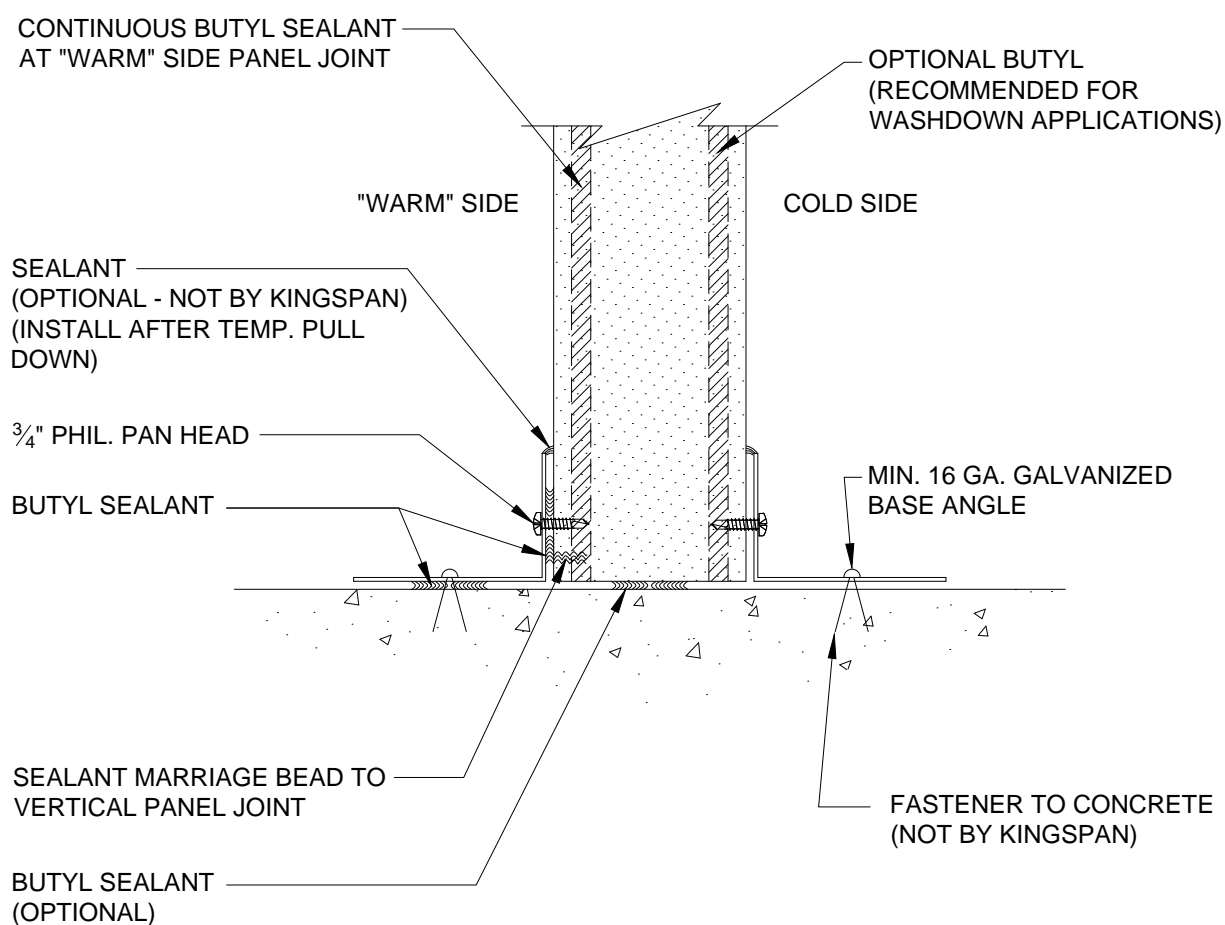
DATE: 7/26/11

**Kingspan**  
Insulated Panels

[www.kingspanpanels.us](http://www.kingspanpanels.us)  
[www.kingspanpanels.ca](http://www.kingspanpanels.ca)



# KS SERIES - VERTICAL INSTALLATION



BASE DETAIL -  
PARTITION  
NON-INSULATED FLOOR

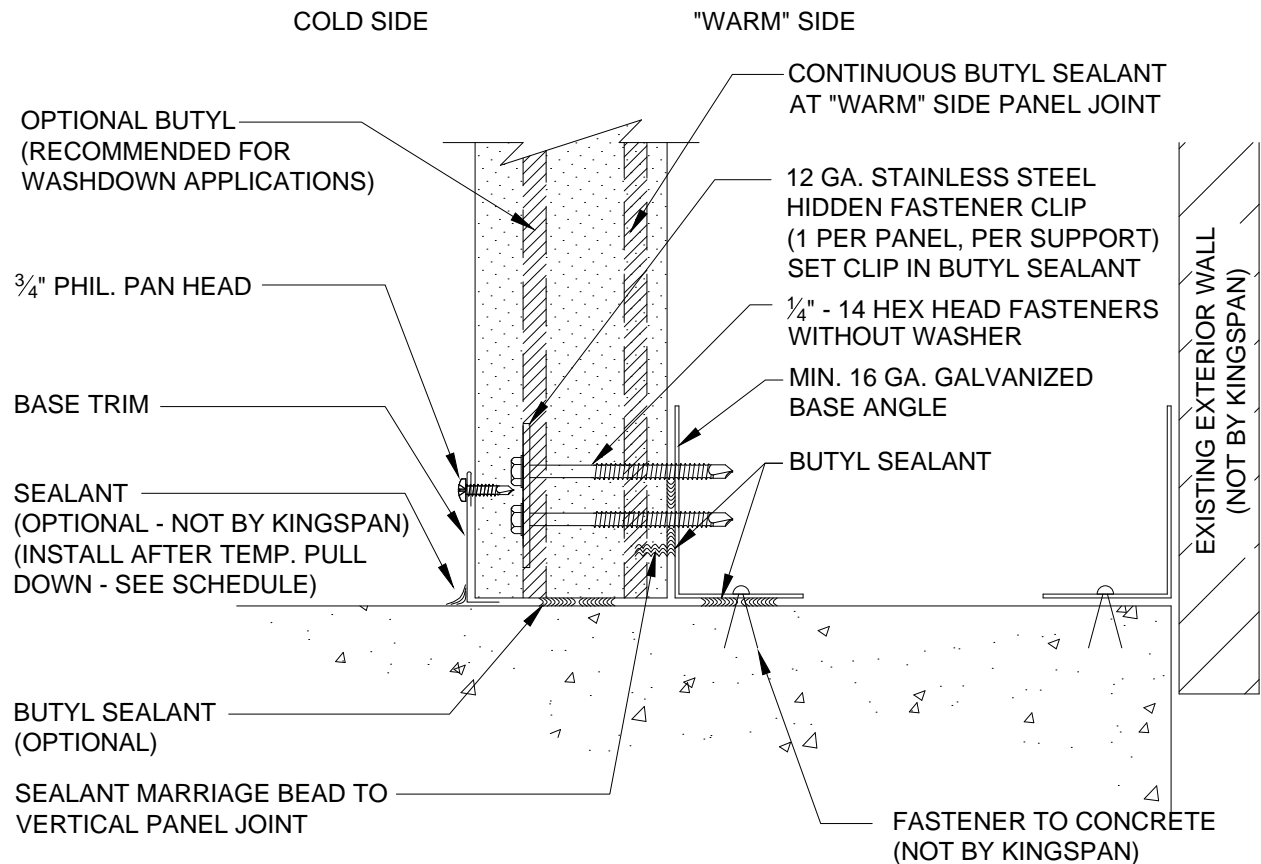
DETAIL #: CS-BS-06-KSV

DATE: 7/26/11



[www.kingspanpanels.us](http://www.kingspanpanels.us)  
[www.kingspanpanels.ca](http://www.kingspanpanels.ca)

# KS SERIES - VERTICAL INSTALLATION



BASE DETAIL - LINER  
PANEL

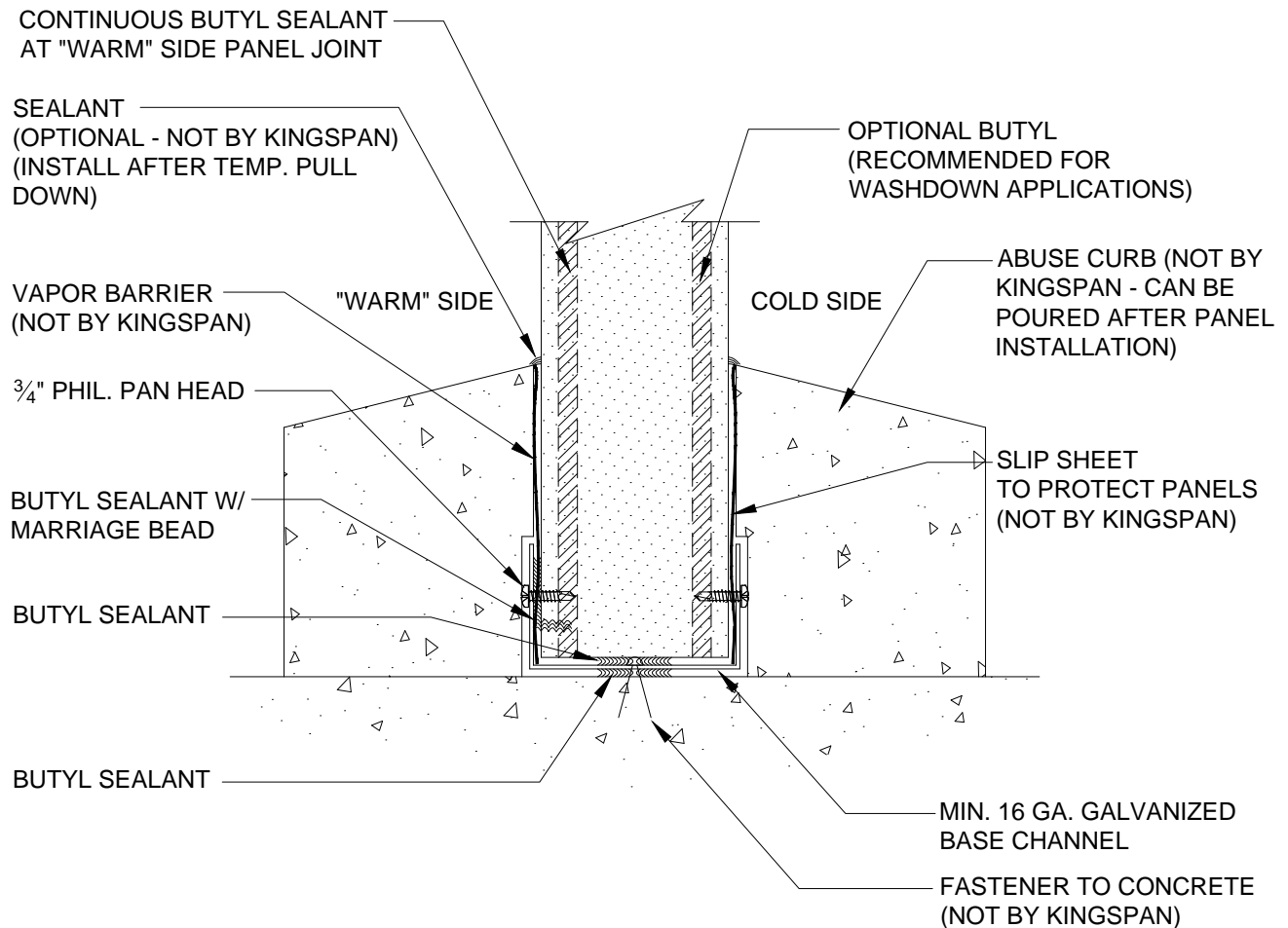
DETAIL #: CS-BS-07-KSV

DATE: 7/26/11

  
**Kingspan**  
Insulated Panels

[www.kingspanpanels.us](http://www.kingspanpanels.us)  
[www.kingspanpanels.ca](http://www.kingspanpanels.ca)

# KS SERIES - VERTICAL INSTALLATION



**BASE DETAIL -  
PARTITION W/ CURBS  
(NON-INSULATED FLOOR)**

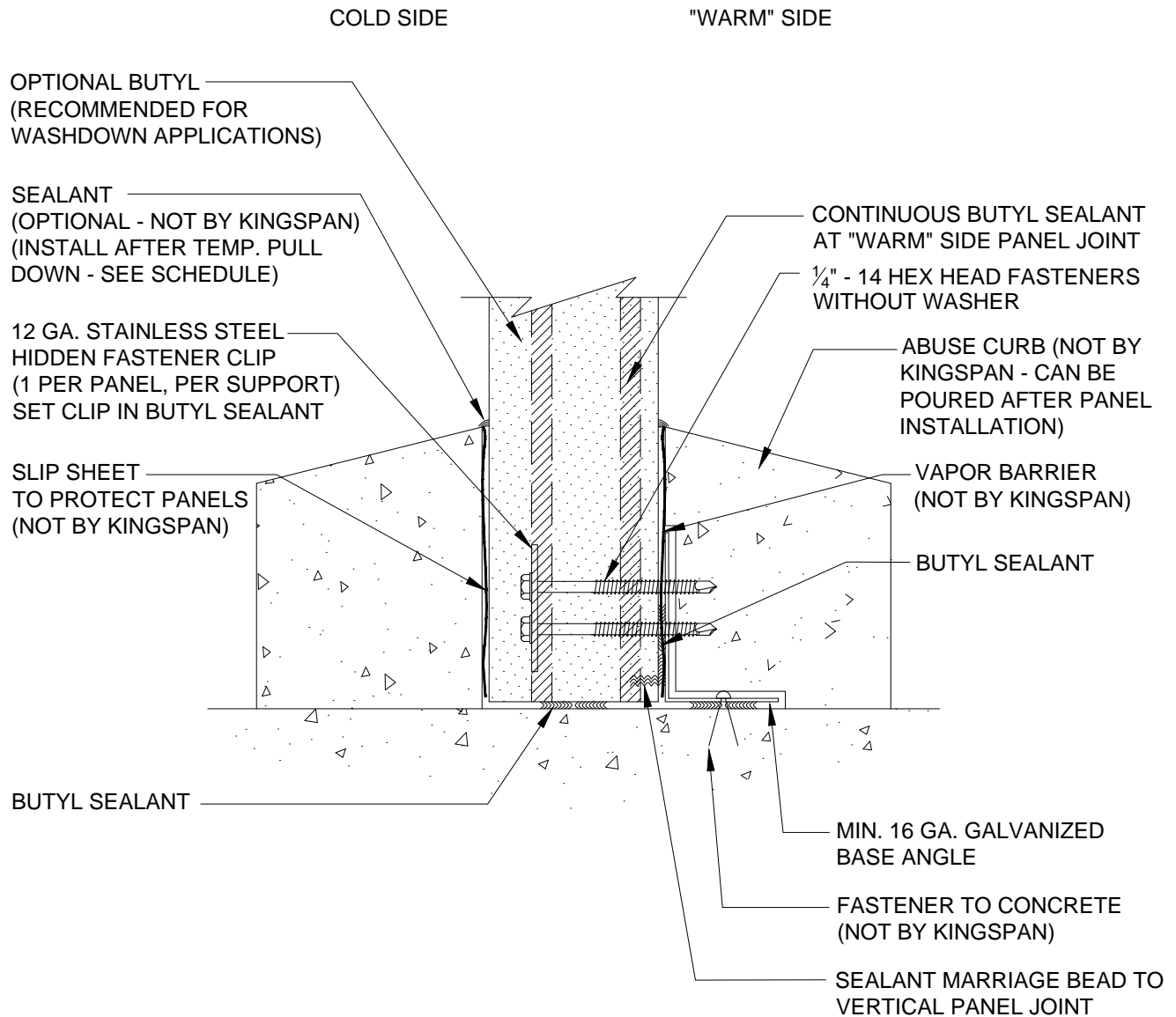
DETAIL #: CS-BS-08-KSV

DATE: 7/26/11



[www.kingspanpanels.us](http://www.kingspanpanels.us)  
[www.kingspanpanels.ca](http://www.kingspanpanels.ca)

# KS SERIES - VERTICAL INSTALLATION



**BASE DETAIL -  
PARTITION W/ CURBS  
(ALTERNATE)**

DETAIL #: CS-BS-09-KSV

DATE: 7/26/11

**Kingspan**  
Insulated Panels

[www.kingspanpanels.us](http://www.kingspanpanels.us)  
[www.kingspanpanels.ca](http://www.kingspanpanels.ca)

# KS SERIES - VERTICAL INSTALLATION

CONTINUOUS BUTYL SEALANT  
AT "WARM" SIDE PANEL JOINT

BUTYL SEALANT

$\frac{3}{4}$ " PHIL. PAN HEAD

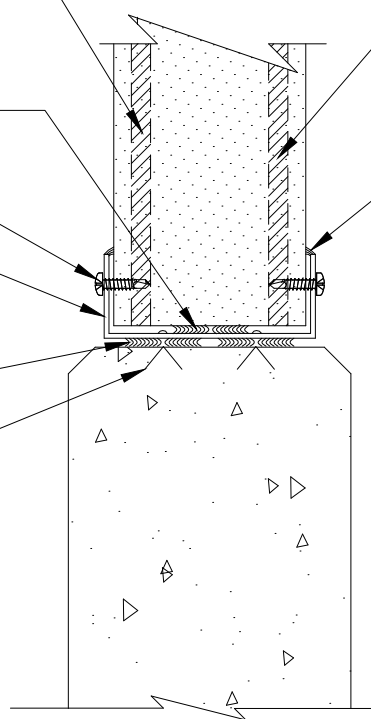
MIN. 16 GA. GALVANIZED  
BASE CHANNEL

BUTYL SEALANT

FASTENER TO CONC.  
(NOT BY KINGSPAN)

OPTIONAL BUTYL  
(RECOMMENDED FOR  
WASHDOWN APPLICATIONS)

SEALANT  
(OPTIONAL - NOT BY KINGSPAN)  
(INSTALL AFTER TEMP. PULL  
DOWN)



CONTINUOUS BUTYL SEALANT  
AT "WARM" SIDE PANEL JOINT

$\frac{3}{4}$ " PHIL. PAN HEAD

MIN. 16 GA. GALVANIZED  
BASE ANGLE

FASTENER TO CONC.  
(NOT BY KINGSPAN)

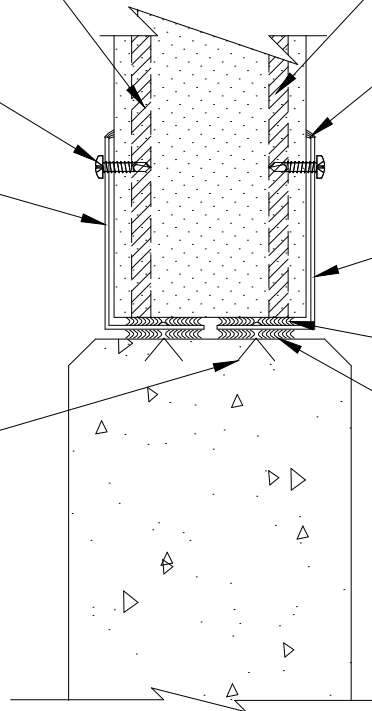
OPTIONAL BUTYL  
(RECOMMENDED FOR  
WASHDOWN APPLICATIONS)

SEALANT  
(OPTIONAL - NOT BY KINGSPAN)  
(INSTALL AFTER TEMP. PULL  
DOWN)

MIN. 16 GA. GALVANIZED  
BASE ANGLE

BUTYL SEALANT

BUTYL SEALANT



PARTITION BASE ON  
TOP OF CURB

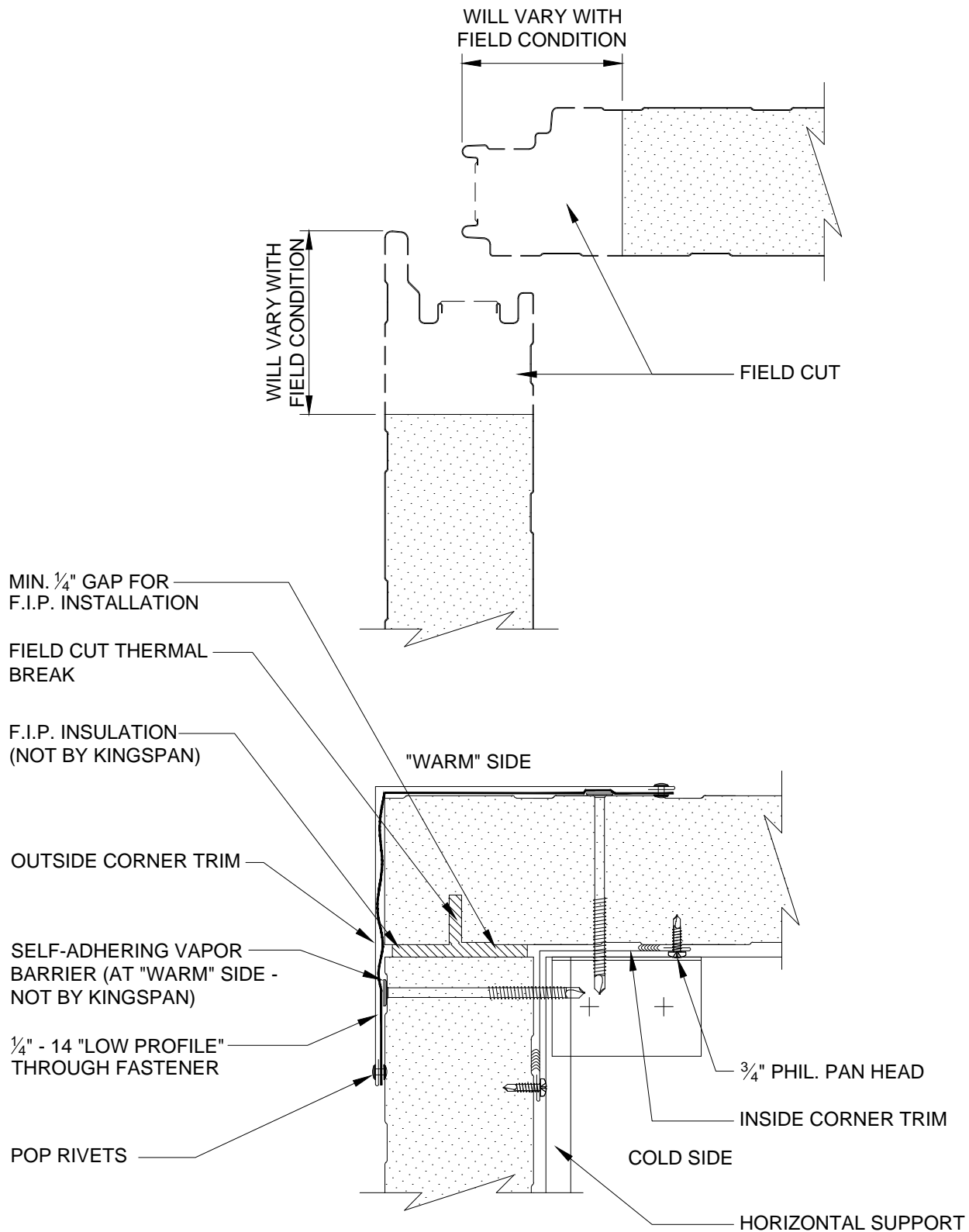
DETAIL #: CS-BS-10-KSV

DATE: 7/26/11

**Kingspan**  
Insulated Panels

[www.kingspanpanels.us](http://www.kingspanpanels.us)  
[www.kingspanpanels.ca](http://www.kingspanpanels.ca)

# KS SERIES - VERTICAL INSTALLATION



**OUTSIDE CORNER -  
FLUSH TRIM**

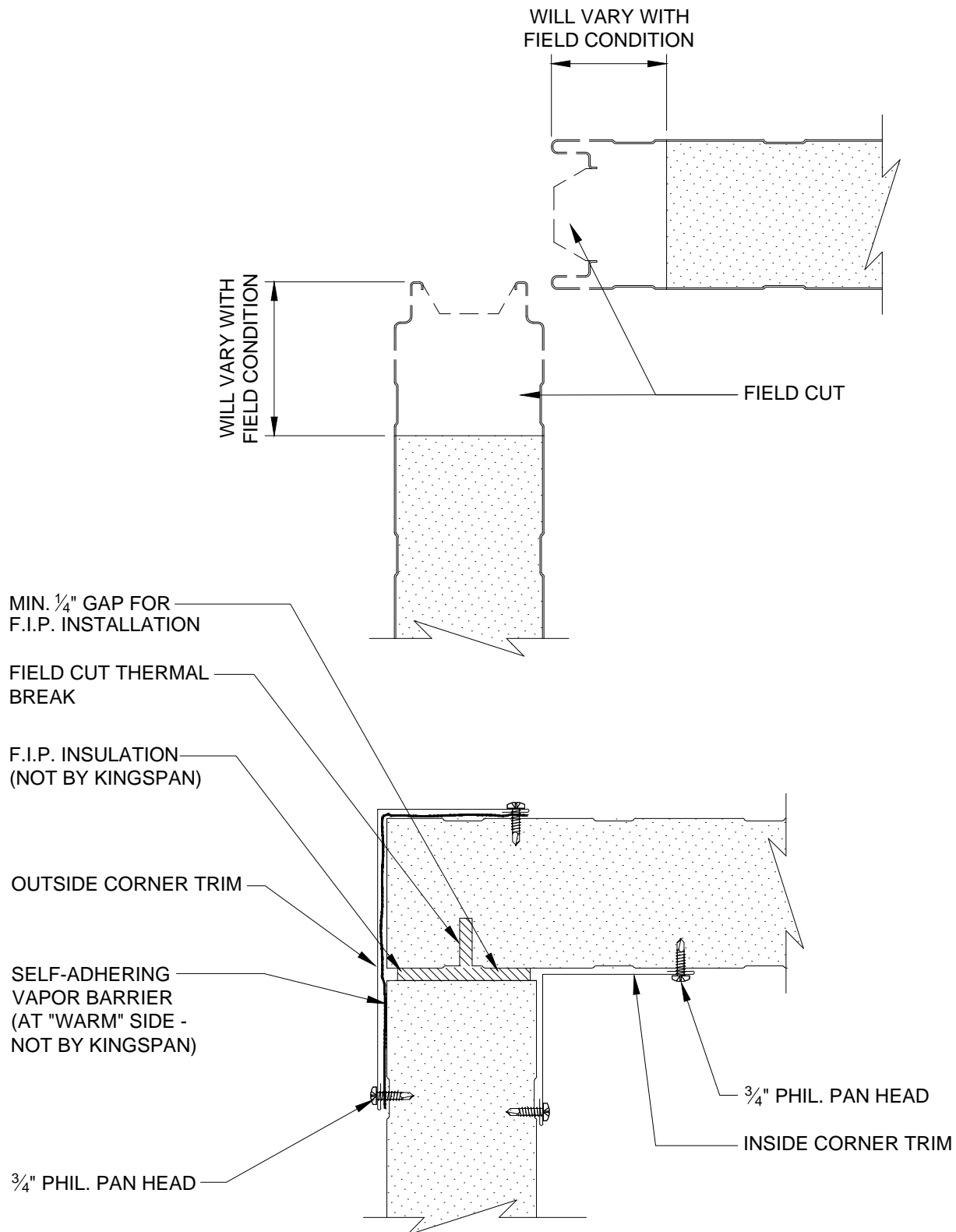
DETAIL #: CS-OC-01-KSV

DATE: 7/26/11

**Kingspan**  
Insulated Panels

[www.kingspanpanels.us](http://www.kingspanpanels.us)  
[www.kingspanpanels.ca](http://www.kingspanpanels.ca)

# KS SERIES - VERTICAL INSTALLATION



OUTSIDE CORNER  
AT PARTITION

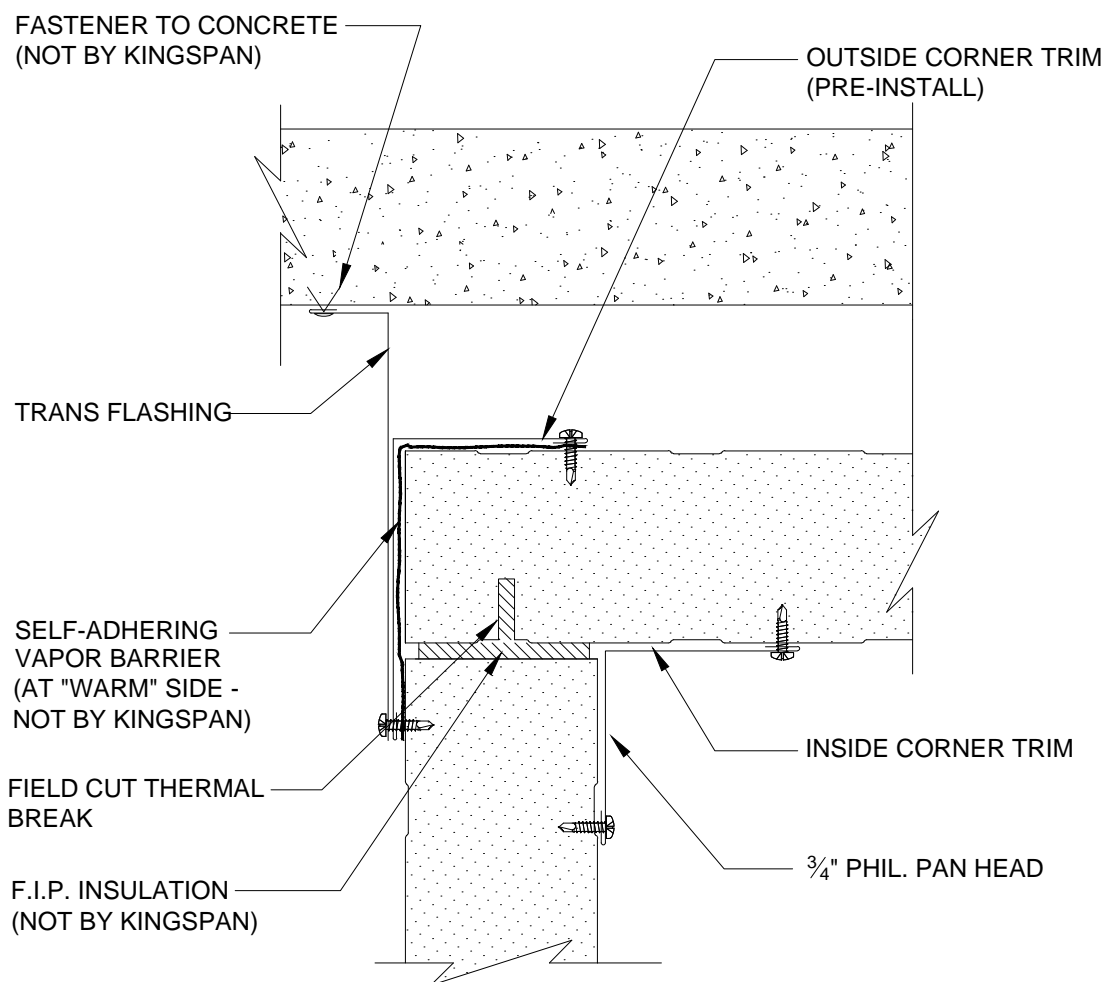
DETAIL #: CS-OC-02-KSV

DATE: 7/26/11

**Kingspan**  
Insulated Panels

[www.kingspanpanels.us](http://www.kingspanpanels.us)  
[www.kingspanpanels.ca](http://www.kingspanpanels.ca)

# KS SERIES - VERTICAL INSTALLATION



OUTSIDE CORNER  
LINER PANEL AT CONC  
WALL

DETAIL #: CS-OC-03-KSV

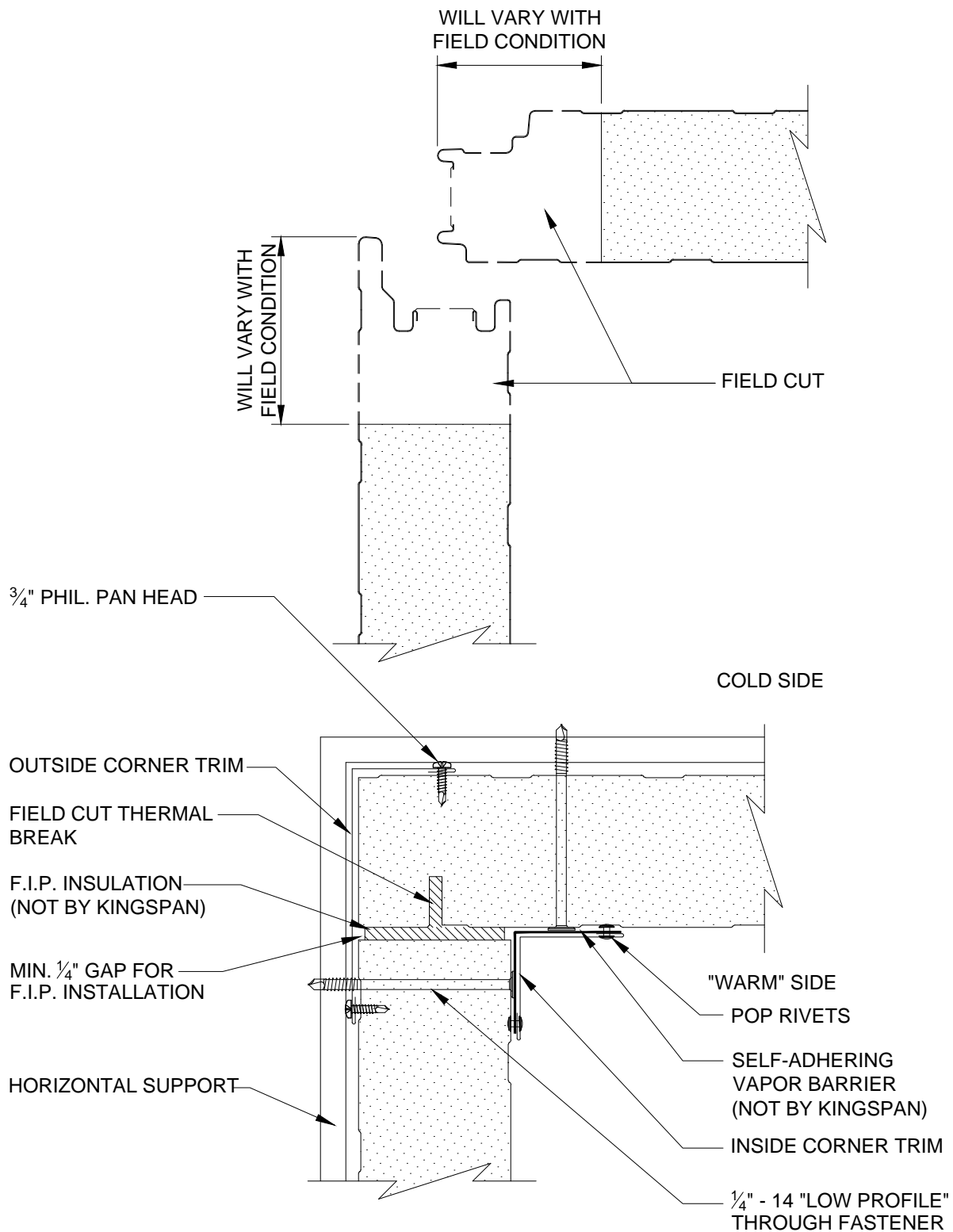
DATE: 7/26/11



[www.kingspanpanels.us](http://www.kingspanpanels.us)  
[www.kingspanpanels.ca](http://www.kingspanpanels.ca)



# KS SERIES - VERTICAL INSTALLATION



INSIDE CORNER -  
FLUSH TRIM

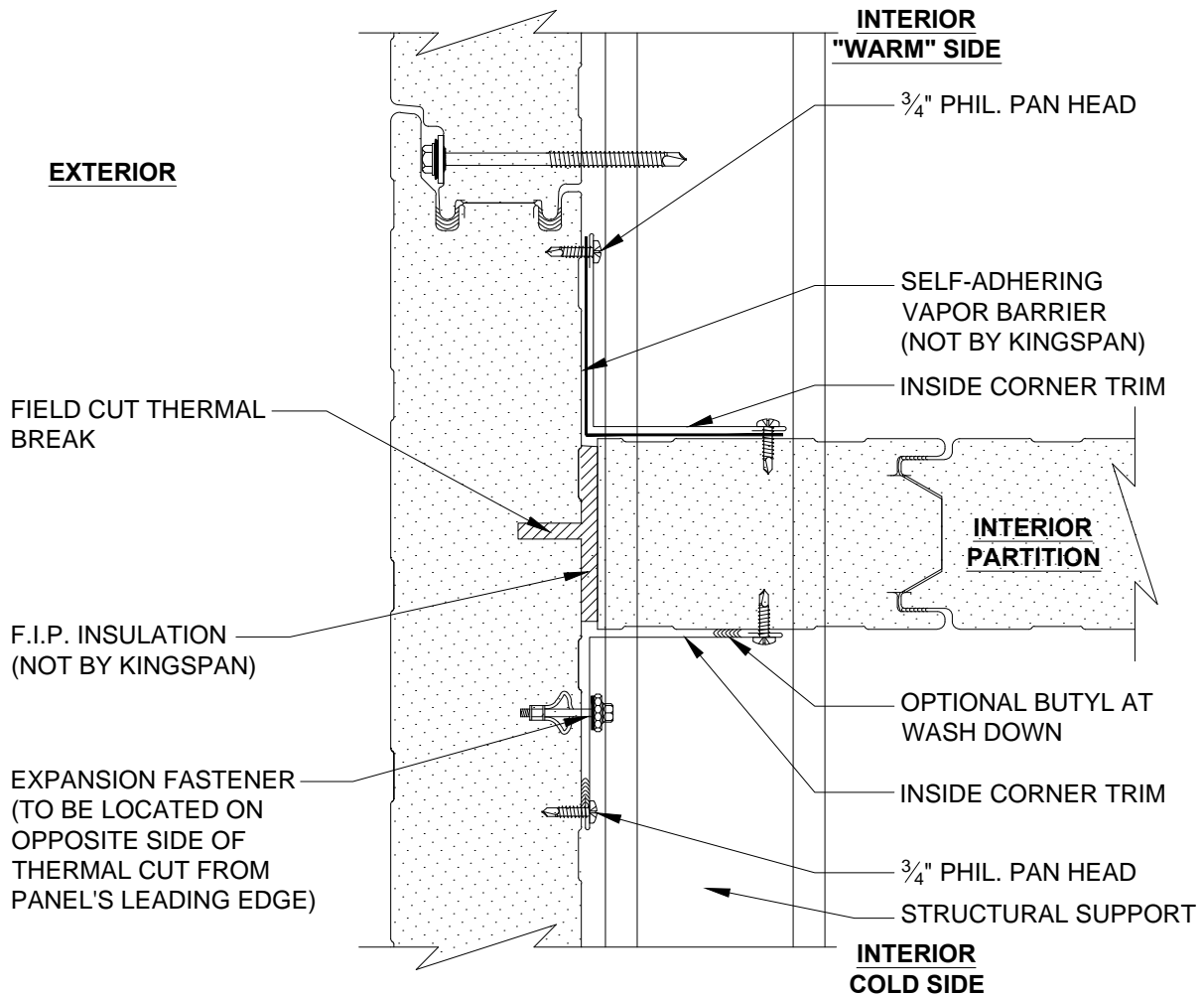
DETAIL #: CS-IC-01-KSV

DATE: 7/26/11

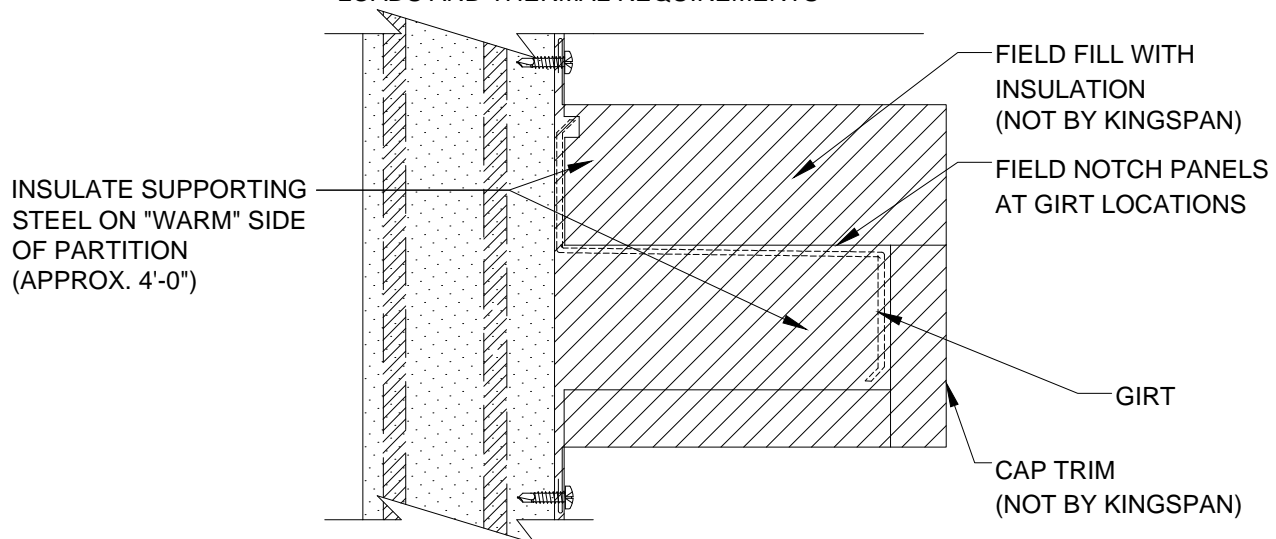
  
**Kingspan**  
Insulated Panels

[www.kingspanpanels.us](http://www.kingspanpanels.us)  
[www.kingspanpanels.ca](http://www.kingspanpanels.ca)

# KS SERIES - VERTICAL INSTALLATION



NOTES: 1) ADDITIONAL FASTENERS MAY BE REQUIRED ON EITHER SIDE OF THE FIELD CUT THERMAL BREAK BASED UPON ACTUAL DESIGN LOADS AND THERMAL REQUIREMENTS



**PARTITION TO  
EXTERIOR WALL**

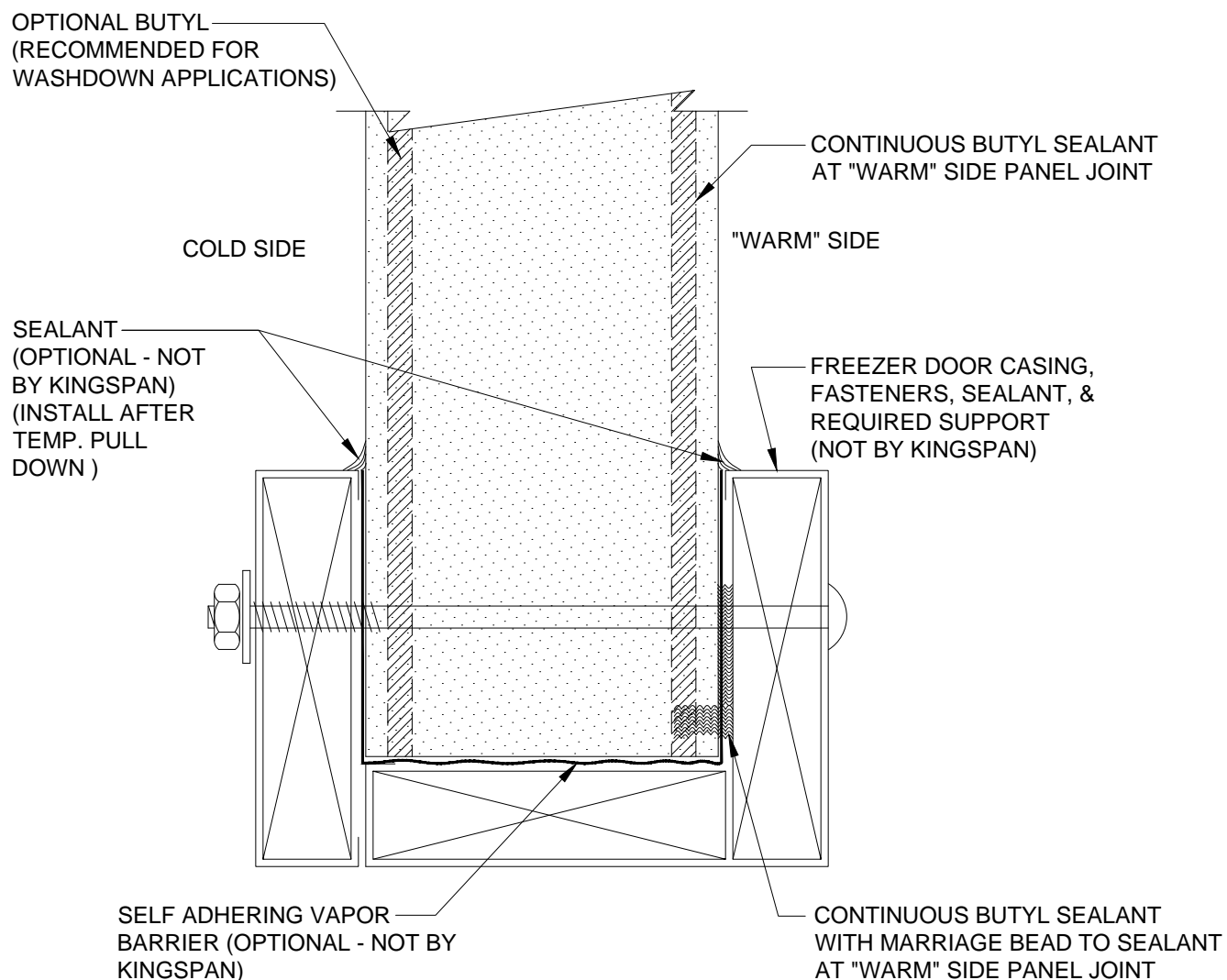
DETAIL #: CS-IC-02-KSV

DATE: 7/26/11

**Kingspan**  
Insulated Panels

[www.kingspanpanels.us](http://www.kingspanpanels.us)  
[www.kingspanpanels.ca](http://www.kingspanpanels.ca)

# KS SERIES - VERTICAL INSTALLATION



HEADER CONDITION

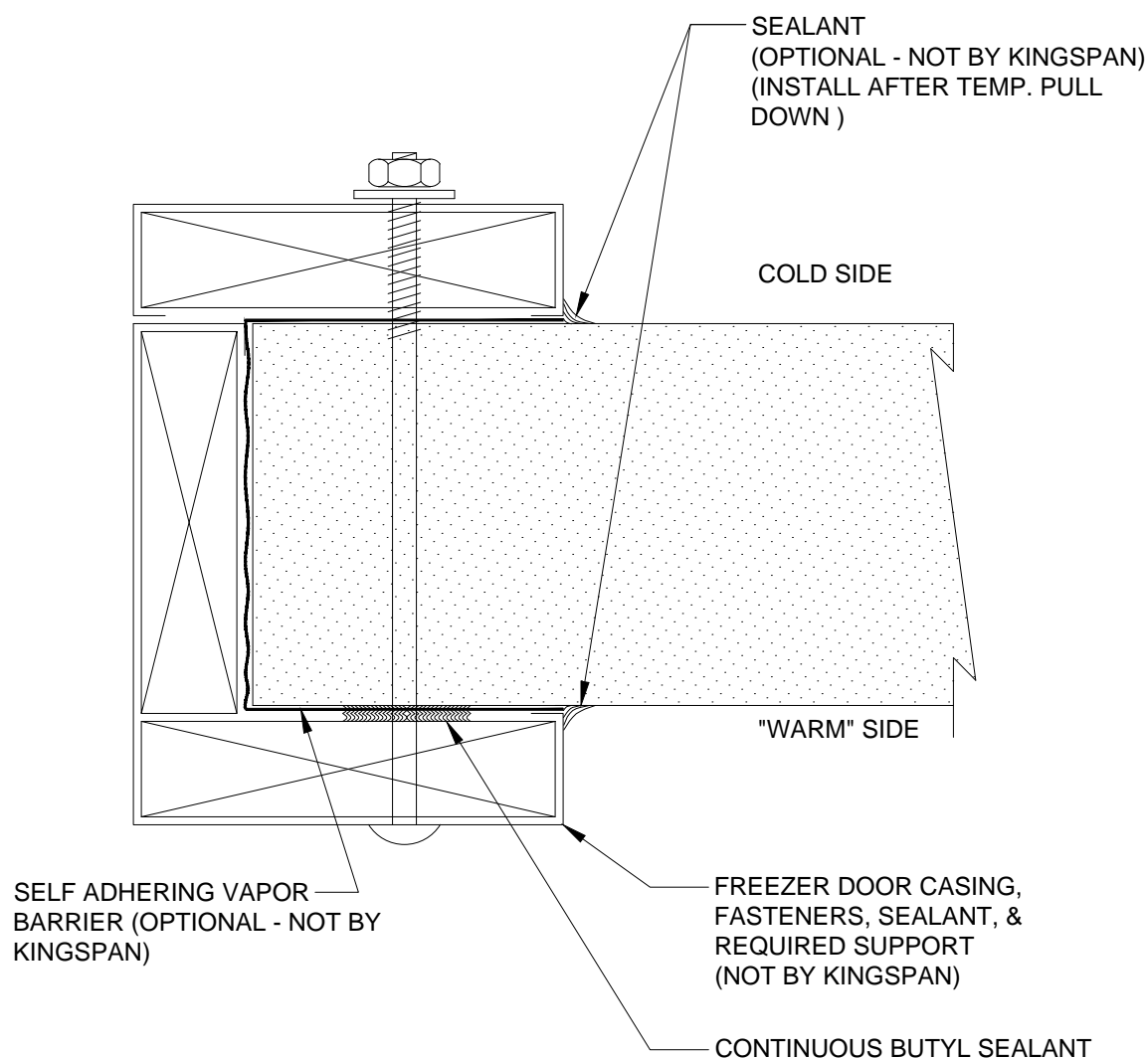
DETAIL #: CS-FO-01-KSV

DATE: 7/26/11

**Kingspan**  
Insulated Panels

[www.kingspanpanels.us](http://www.kingspanpanels.us)  
[www.kingspanpanels.ca](http://www.kingspanpanels.ca)

# KS SERIES - VERTICAL INSTALLATION



JAMB CONDITION

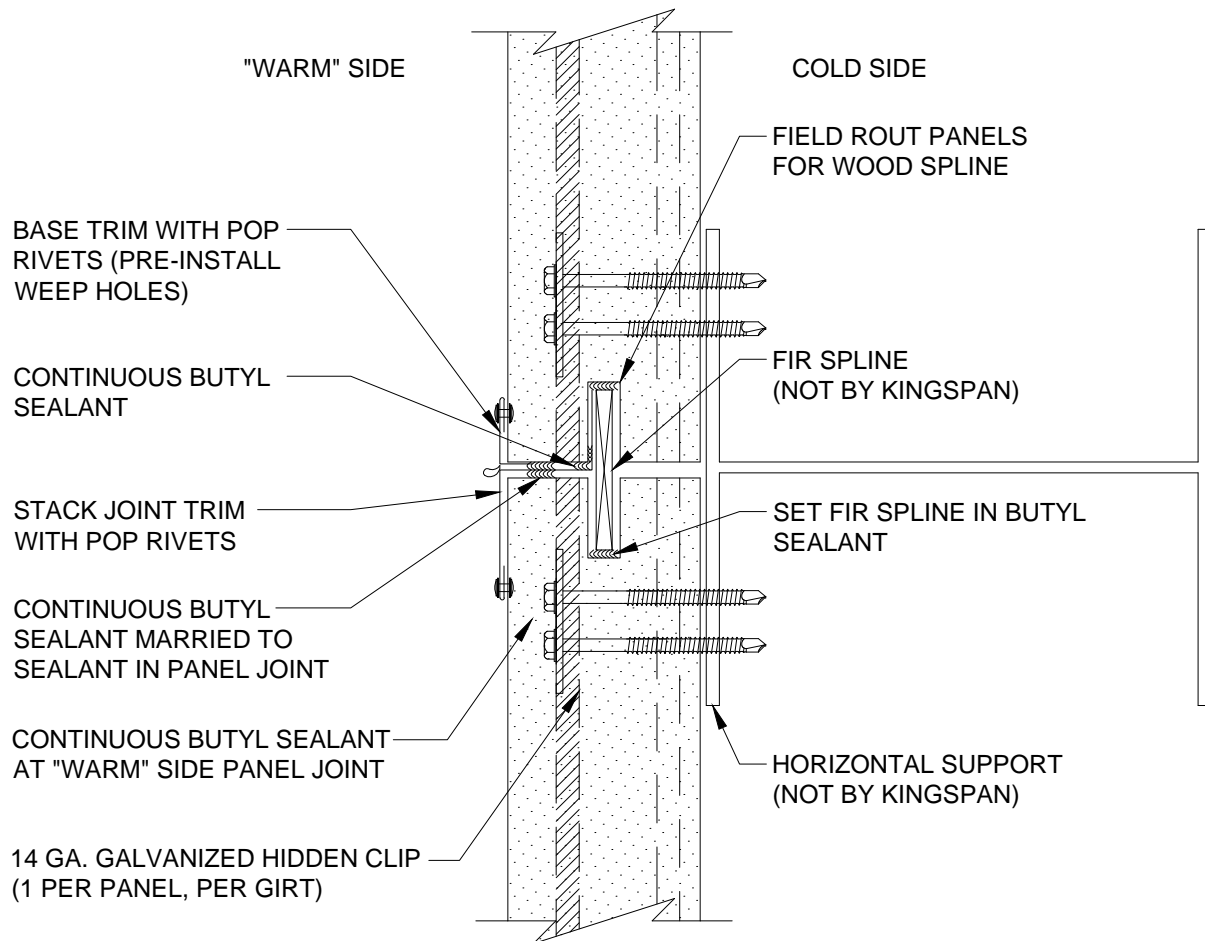
DETAIL #: CS-FO-02-KSV

DATE: 7/26/11

**Kingspan**  
Insulated Panels

[www.kingspanpanels.us](http://www.kingspanpanels.us)  
[www.kingspanpanels.ca](http://www.kingspanpanels.ca)

# KS SERIES - VERTICAL INSTALLATION



- NOTES: 1) SEE DETAIL CS-TL-01-KSV AND CS-TL-02-KSV FOR PROPER TRIM LAP DETAILS  
2) CONTACT KINGSPAN TECHNICAL SERVICES FOR PROPER PANEL FASTENING REQUIREMENTS

STACK JOINT

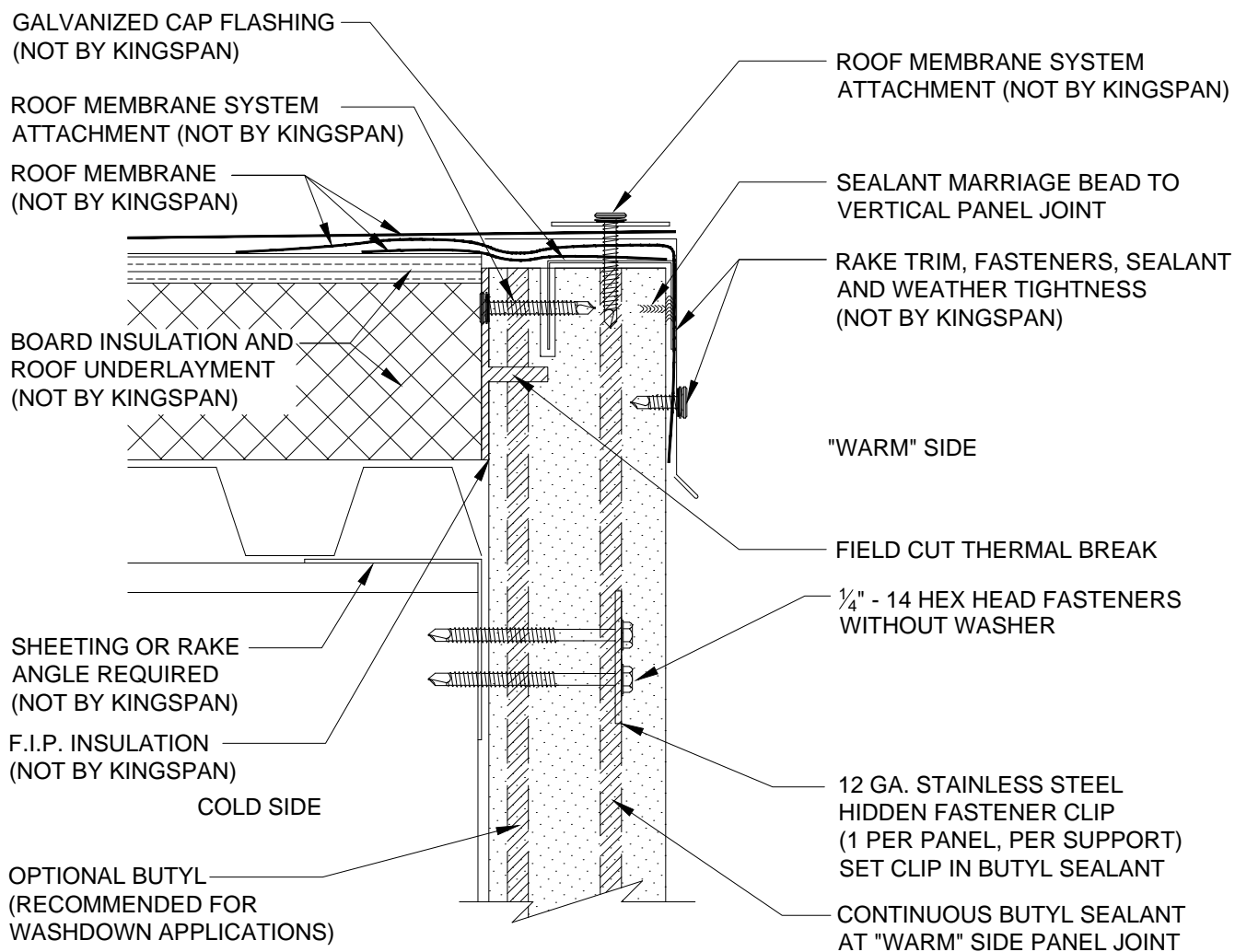
DETAIL #: CS-ST-01-KSV

DATE: 7/26/11

**Kingspan**  
Insulated Panels

[www.kingspanpanels.us](http://www.kingspanpanels.us)  
[www.kingspanpanels.ca](http://www.kingspanpanels.ca)

# KS SERIES - VERTICAL INSTALLATION



RAKE

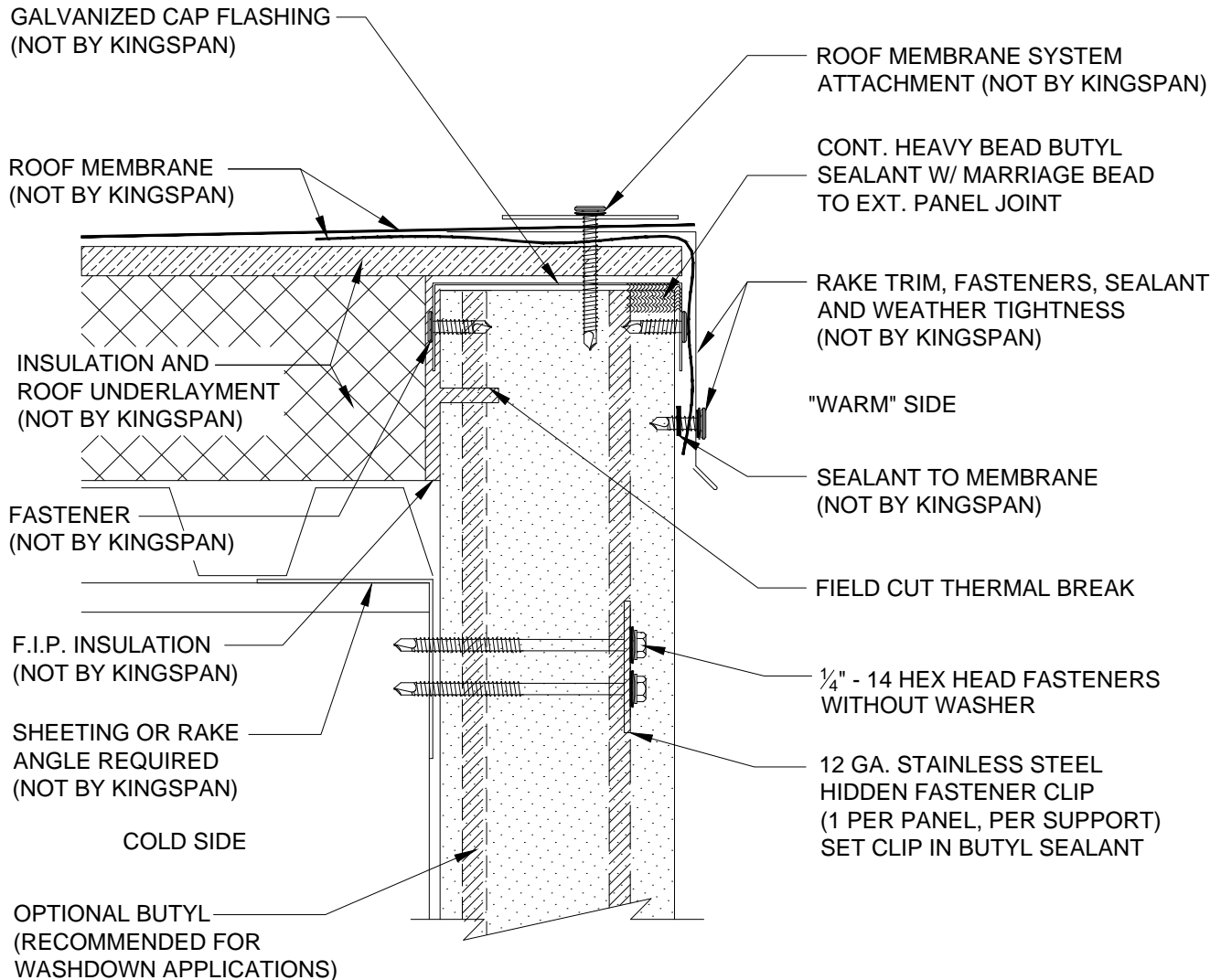
DETAIL #: CS-RK-01-KSV

DATE: 7/26/11



[www.kingspanpanels.us](http://www.kingspanpanels.us)  
[www.kingspanpanels.ca](http://www.kingspanpanels.ca)

# KS SERIES - VERTICAL INSTALLATION



**RAKE W/ MEMBRANE  
ROOF**

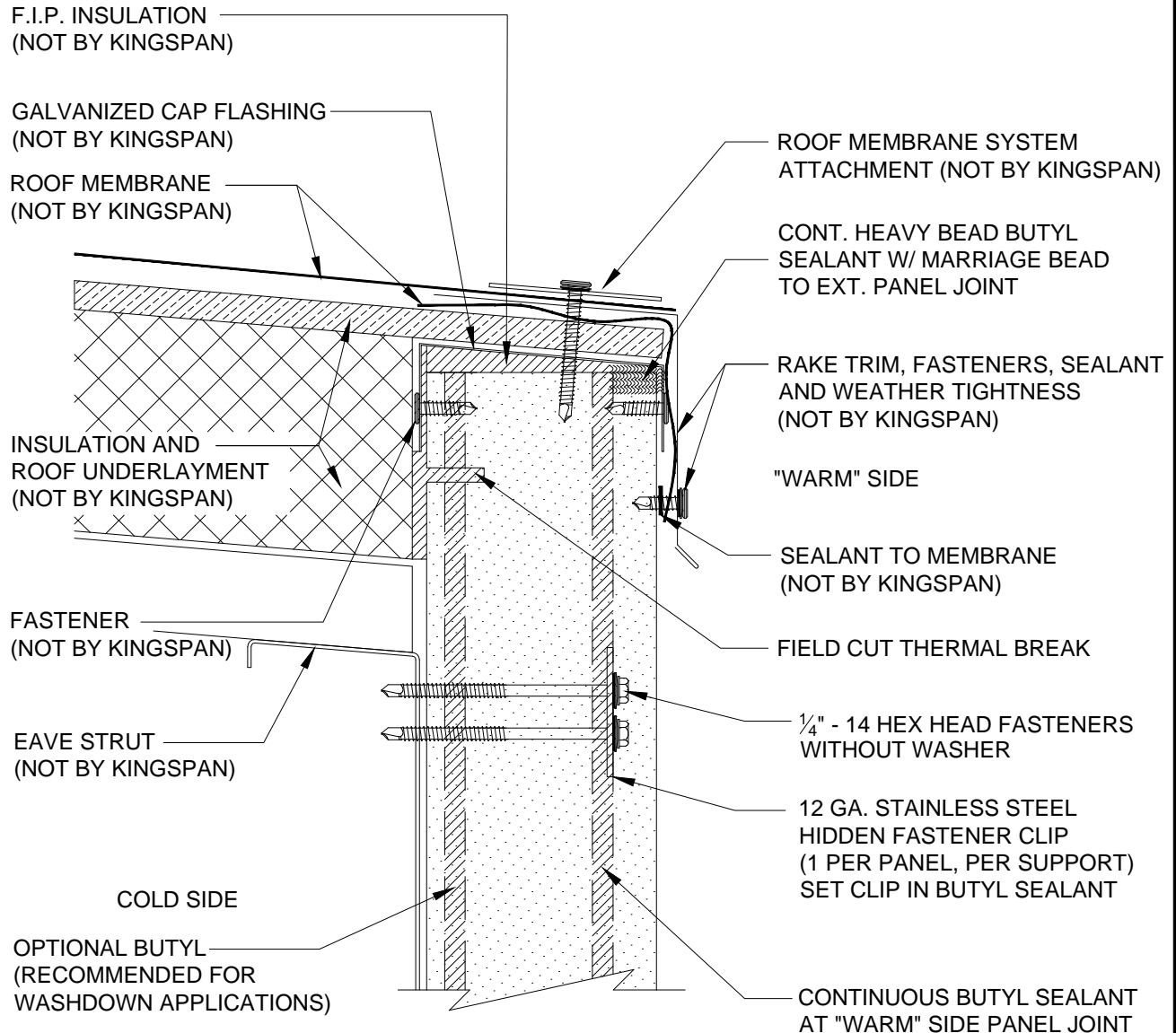
DETAIL #: CS-RK-02-KSV

DATE: 7/26/11



www.kingspanpanels.us  
www.kingspanpanels.ca

# KS SERIES - VERTICAL INSTALLATION



LOW EAVE

DETAIL #: CS-EV-01-KSV

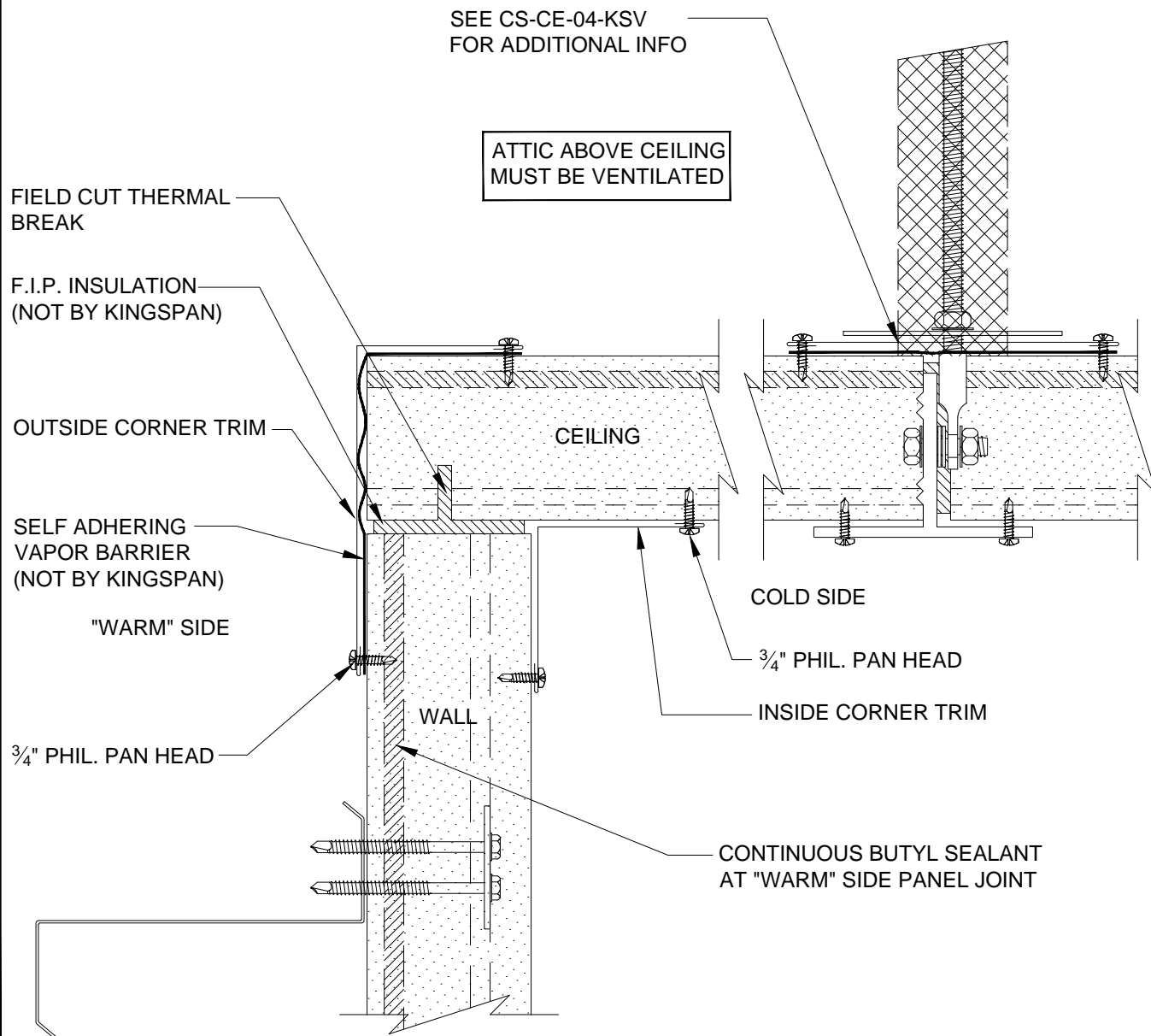
DATE: 7/26/11



[www.kingspanpanels.us](http://www.kingspanpanels.us)  
[www.kingspanpanels.ca](http://www.kingspanpanels.ca)



# KS SERIES - VERTICAL INSTALLATION



INTERIOR WALL TO  
CEILING

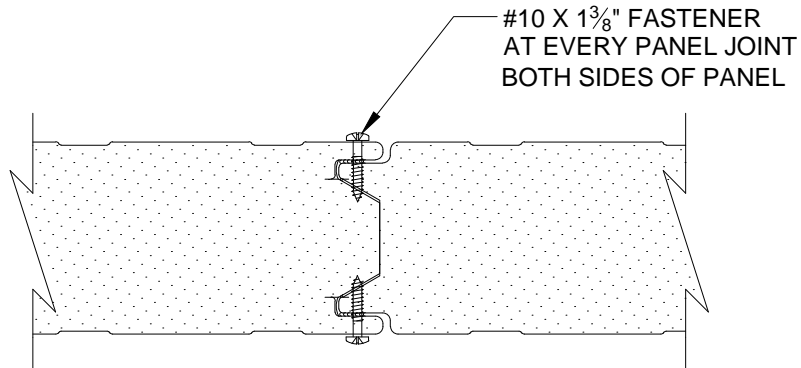
DETAIL #: CS-CE-01-KSV

DATE: 7/26/11

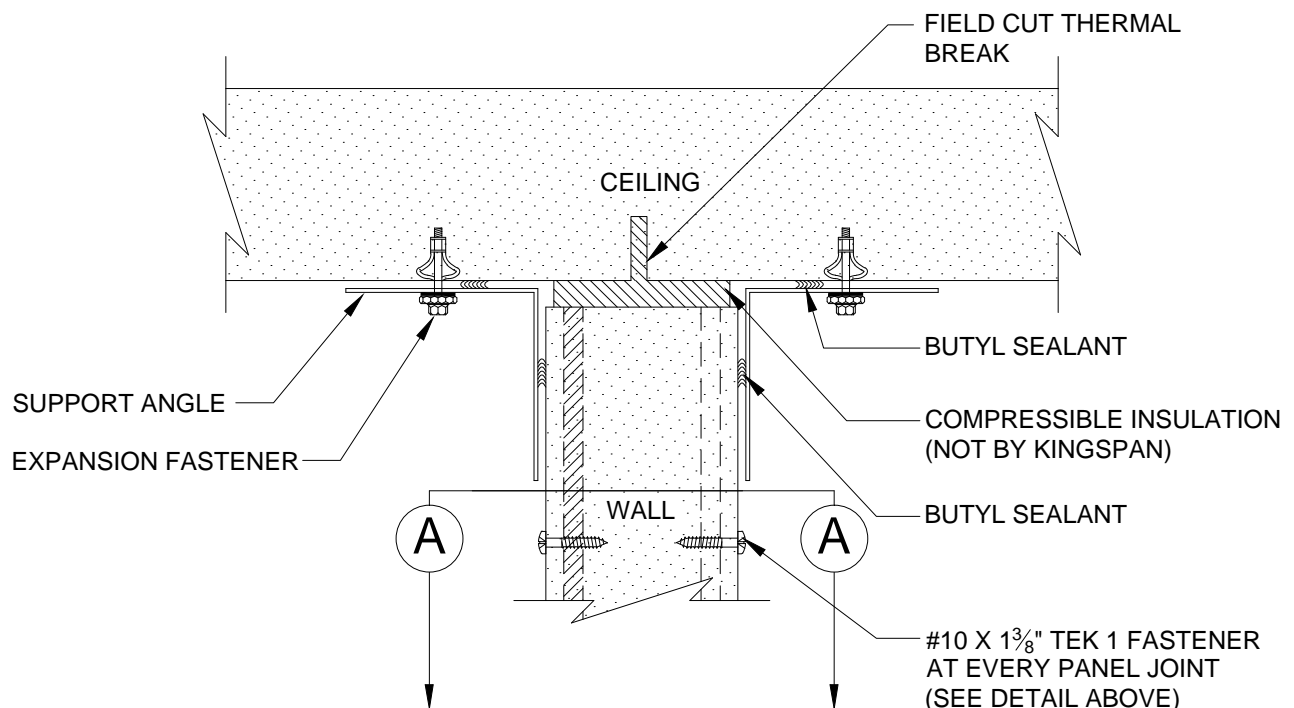
**Kingspan**  
Insulated Panels

[www.kingspanpanels.us](http://www.kingspanpanels.us)  
[www.kingspanpanels.ca](http://www.kingspanpanels.ca)

# KS SERIES - VERTICAL INSTALLATION



AA CROSS SECTION  
(SECTION VIEW)



WALL TO CEILING  
INTERSECTION

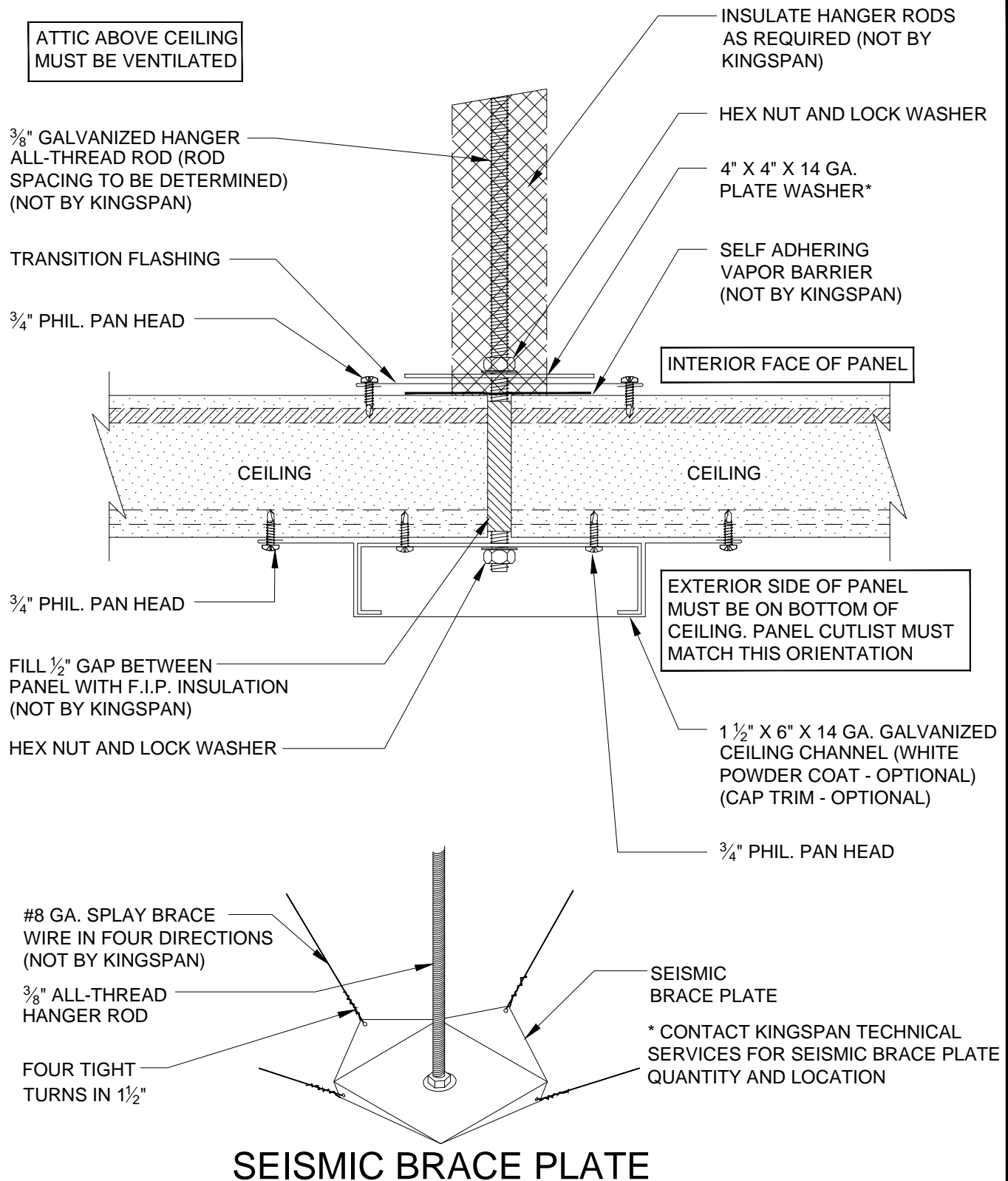
DETAIL #: CS-CE-02-KSV

DATE: 7/26/11

  
**Kingspan**  
Insulated Panels

[www.kingspanpanels.us](http://www.kingspanpanels.us)  
[www.kingspanpanels.ca](http://www.kingspanpanels.ca)

# KS SERIES - VERTICAL INSTALLATION



CEILING CHANNEL

DETAIL #: CS-CE-03-KSV

DATE: 7/26/11

**Kingspan**  
Insulated Panels

[www.kingspanpanels.us](http://www.kingspanpanels.us)  
[www.kingspanpanels.ca](http://www.kingspanpanels.ca)

# KS SERIES - VERTICAL INSTALLATION

ATTIC ABOVE CEILING  
MUST BE VENTILATED

$\frac{3}{8}$ " GALVANIZED HANGER  
ALL-THREAD ROD (SPACED  
NO GREATER THAN 6'-0" O.C.)  
(NOT BY KINGSPAN)

TRANSITION FLASHING

$\frac{3}{4}$ " PHIL. PAN HEAD

INTERIOR FACE OF PANEL

INSULATE HANGER RODS  
AS REQUIRED (NOT BY  
KINGSPAN)

HEX NUT AND LOCK  
WASHER

4" X 4" X 14 GA.  
PLATE WASHER\*

SELF-ADHERING  
VAPOR BARRIER  
(NOT BY KINGSPAN)

EXTERIOR SIDE OF PANEL  
MUST BE ON BOTTOM OF  
CEILING. PANEL CUTLIST MUST  
MATCH THIS ORIENTATION

4" X 3" X  $\frac{3}{16}$ " EXTRUDED  
ALUMINUM CEILING TEE  
(WHITE POWDER COAT FINISH)

FILL  $\frac{1}{2}$ " GAP BETWEEN  
PANEL WITH F.I.P. INSULATION  
(NOT BY KINGSPAN)

$\frac{3}{8}$ " Ø EYE COUPLER NUT

$\frac{3}{8}$ " Ø x 1  $\frac{1}{2}$ " BOLT WITH (3)  
 $\frac{3}{8}$ " WASHERS AND (1)  
LOCK-NUT PER BOLT

$\frac{3}{4}$ " PHIL. PAN HEAD

BUTYL SEALANT

#8 GA. SPLAY BRACE  
WIRE IN FOUR DIRECTIONS  
(NOT BY KINGSPAN)

$\frac{3}{8}$ " ALL-THREAD  
HANGER ROD

FOUR TIGHT  
TURNS IN 1  $\frac{1}{2}$ "

SEISMIC  
BRACE PLATE

\* CONTACT KINGSPAN TECHNICAL  
SERVICES FOR SEISMIC BRACE PLATE  
QUANTITY AND LOCATION

## SEISMIC BRACE PLATE

CEILING TEE

DETAIL #: CS-CE-04-KSV

DATE: 7/26/11

**Kingspan**  
Insulated Panels

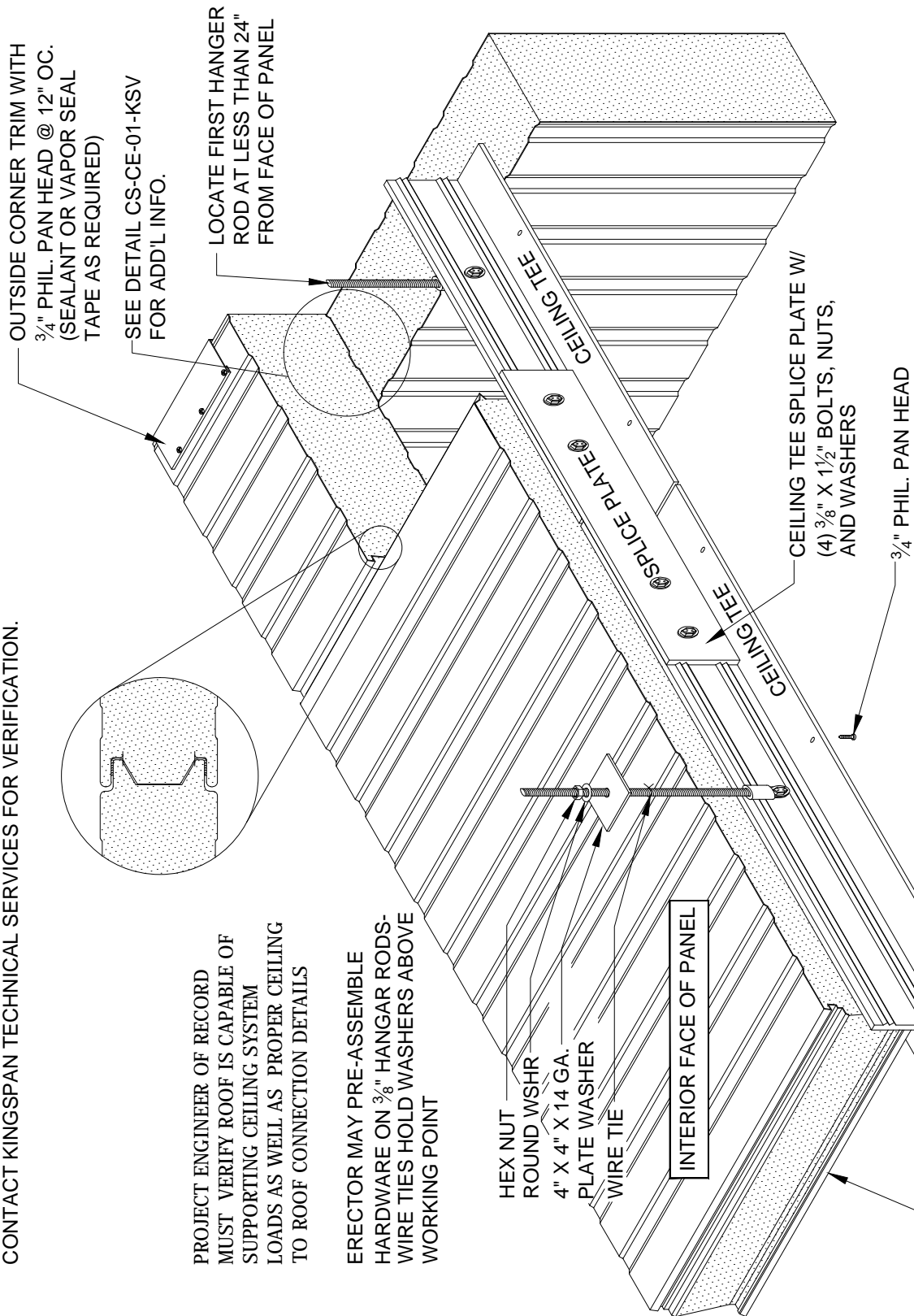
[www.kingspanpanels.us](http://www.kingspanpanels.us)  
[www.kingspanpanels.ca](http://www.kingspanpanels.ca)

# KS SERIES - VERTICAL INSTALLATION

SEISMIC BRACE PLATE (IF REQUIRED) TO BE LOCATED AT EVERY THIRD ROD LOCATION IN LIEU OF PLATE WASHER (SEE DETAIL CS-CE-04-KSV). CONTACT KINGSPAN TECHNICAL SERVICES FOR VERIFICATION.

PROJECT ENGINEER OF RECORD MUST VERIFY ROOF IS CAPABLE OF SUPPORTING CEILING SYSTEM LOADS AS WELL AS PROPER CEILING TO ROOF CONNECTION DETAILS

ERECTOR MAY PRE-ASSEMBLE HARDWARE ON  $\frac{3}{8}$ " HANGAR RODS- WIRE TIES HOLD WASHERS ABOVE WORKING POINT



## CEILING TEE ASSEMBLY

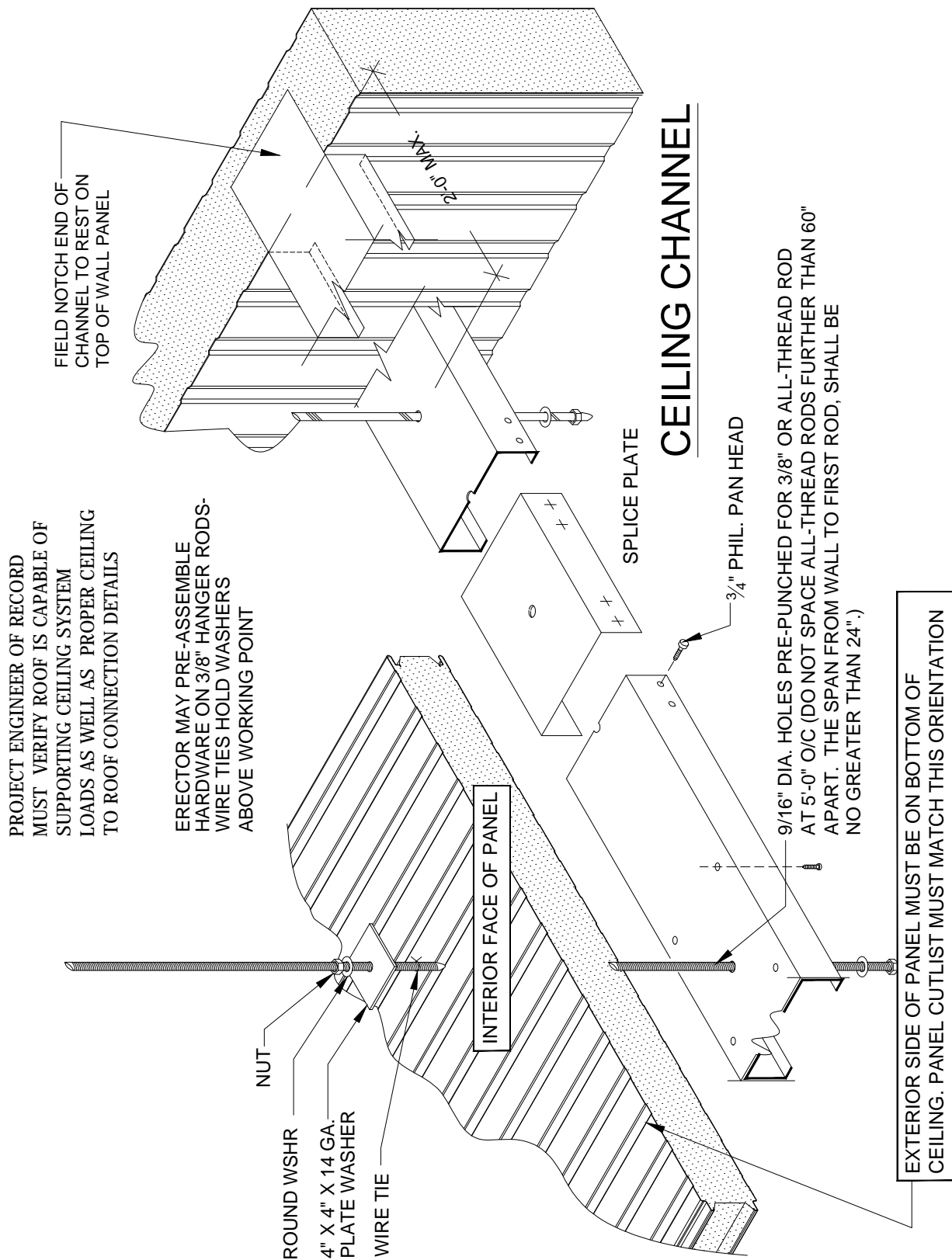
DETAIL #: CS-CE-05-KSV

DATE: 7/26/11



www.kingspanpanels.us  
www.kingspanpanels.ca

# KS SERIES - VERTICAL INSTALLATION



## CEILING CHANNEL ASSEMBLY

DETAIL #: CS-CE-06-KSV

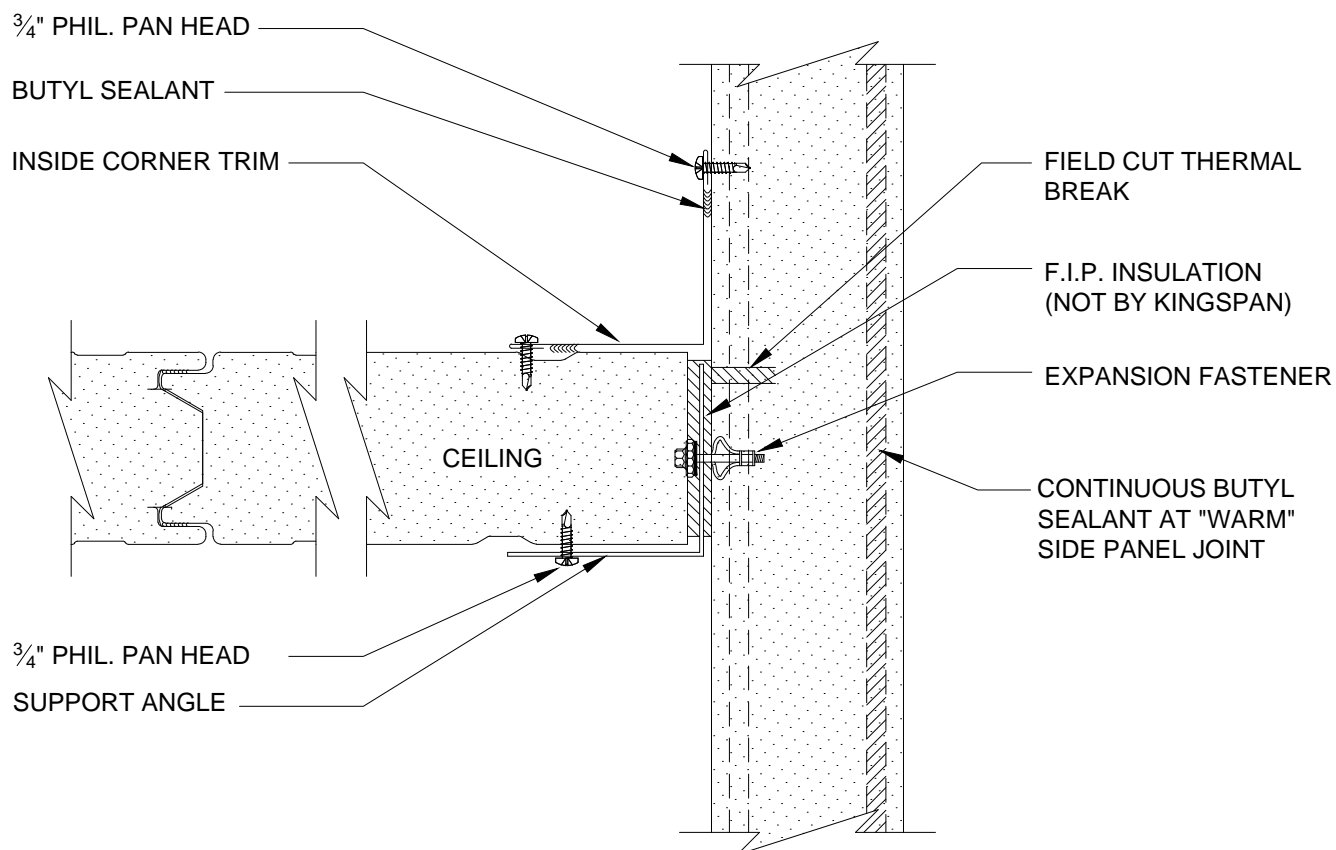
DATE: 7/26/11



www.kingspanpanels.us  
www.kingspanpanels.ca

# KS SERIES - VERTICAL INSTALLATION

ATTIC ABOVE CEILING  
MUST BE VENTILATED



NOTE: CONTACT KINGSPAN TECHNICAL SERVICES FOR ENGINEERING ASSISTANCE

CEILING TO WALL -  
LONGITUDINAL

DETAIL #: CS-CE-07-KSV

DATE: 7/26/11



www.kingspanpanels.us  
www.kingspanpanels.ca

# KS SERIES - VERTICAL INSTALLATION

ATTIC ABOVE CEILING  
MUST BE VENTILATED

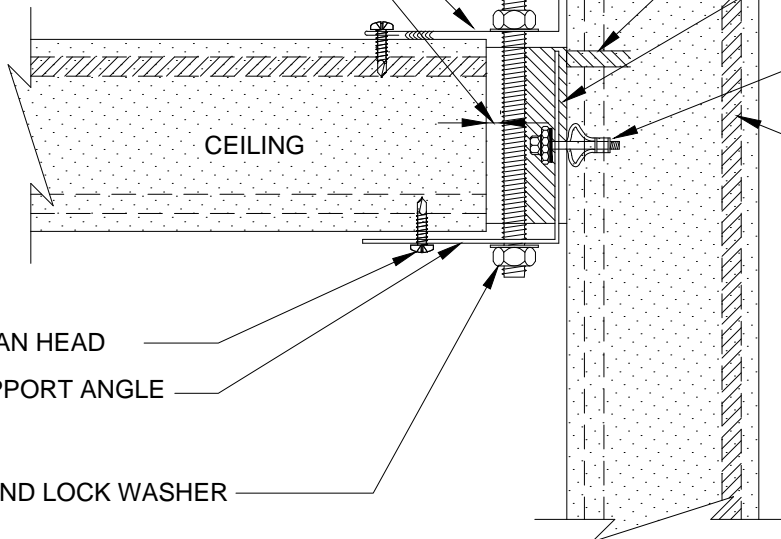
$\frac{3}{8}$ " GALVANIZED HANGER  
ALL-THREAD ROD (ROD  
SPACING TO BE DETERMINED)  
(NOT BY KINGSPAN)

$\frac{3}{4}$ " PHIL. PAN HEAD

BUTYL SEALANT

INSIDE CORNER TRIM

$\frac{1}{4}$ " MAX DISTANCE BETWEEN PANEL  
EDGE AND THREAD ROD



FIELD CUT THERMAL  
BREAK

F.I.P. INSULATION  
(NOT BY KINGSPAN)

EXPANSION FASTENER

CONTINUOUS BUTYL  
SEALANT AT "WARM"  
SIDE PANEL JOINT

$\frac{3}{4}$ " PHIL. PAN HEAD

16 GA. SUPPORT ANGLE

HEX NUT AND LOCK WASHER

NOTE: CONTACT KINGSPAN TECHNICAL SERVICES FOR ENGINEERING ASSISTANCE

CEILING TO WALL -  
TRANSVERSE

DETAIL #: CS-CE-08-KSV

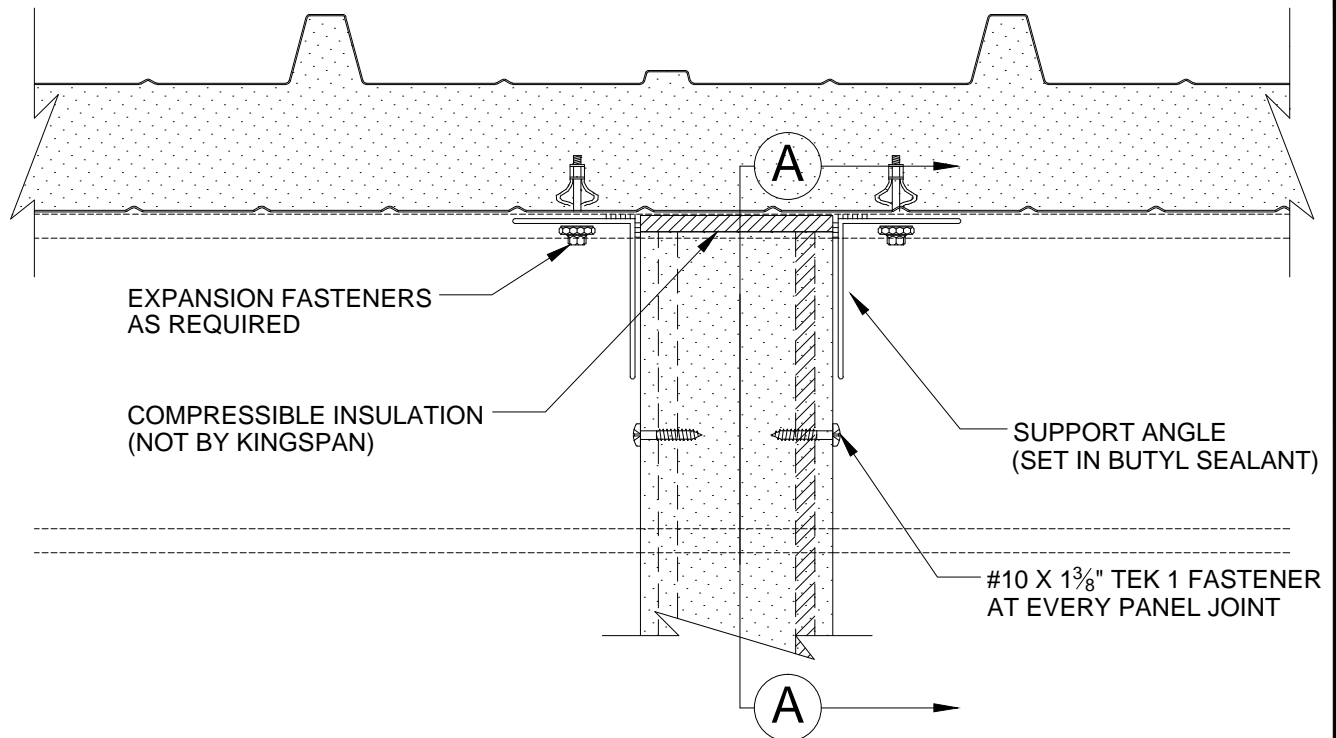
DATE: 7/26/11

  
**Kingspan**  
Insulated Panels

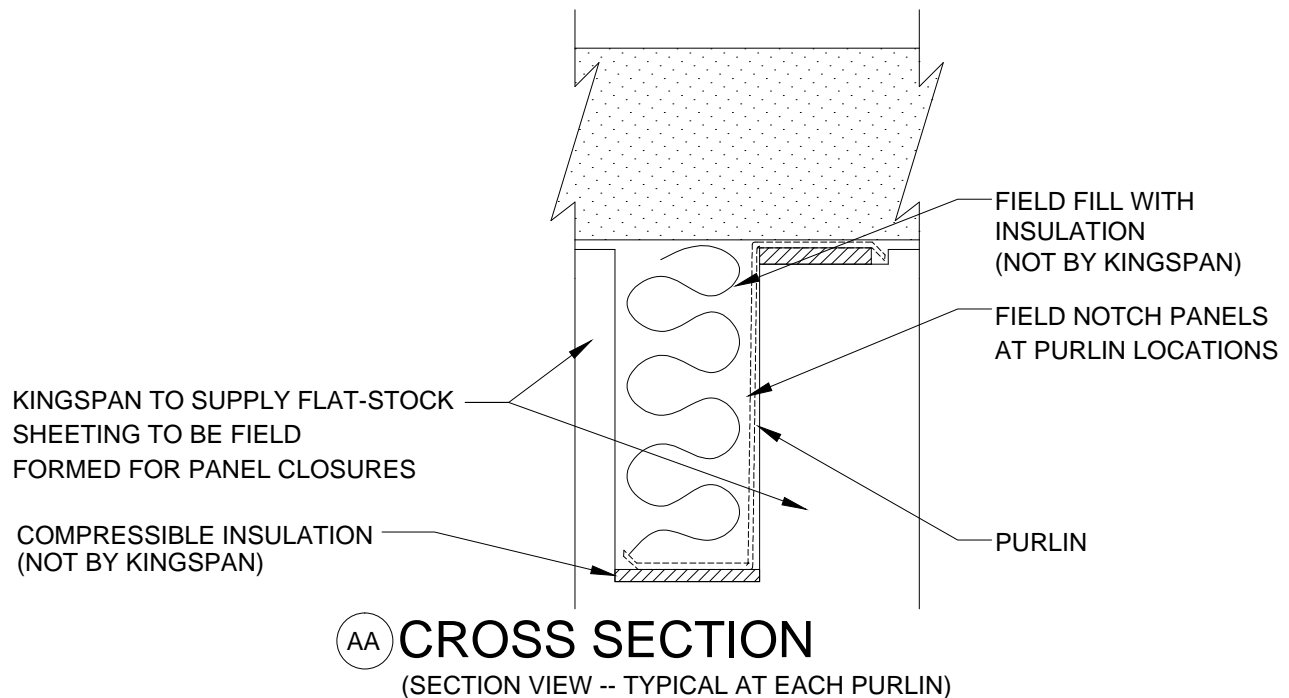
[www.kingspanpanels.us](http://www.kingspanpanels.us)  
[www.kingspanpanels.ca](http://www.kingspanpanels.ca)



# KS SERIES - VERTICAL INSTALLATION



## PARTITION TO ROOF (PERPENDICULAR TO PURLIN)



PARTITION TO ROOF

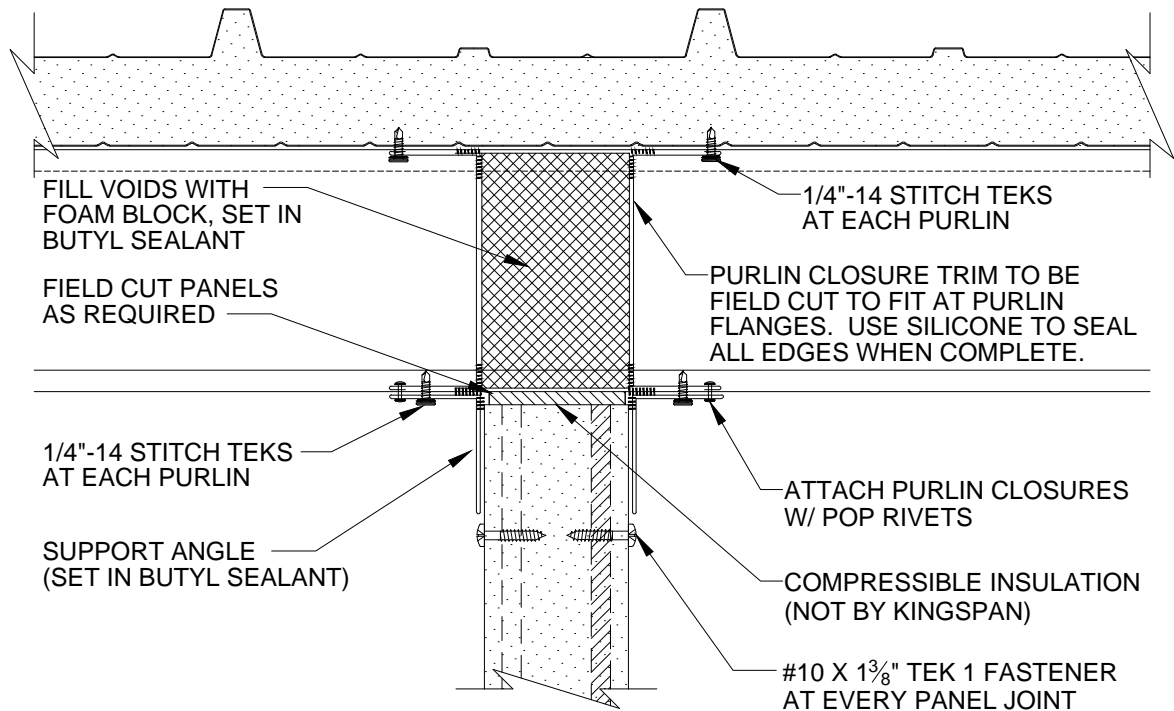
DETAIL #: CS-CE-09-KSV

DATE: 7/26/11

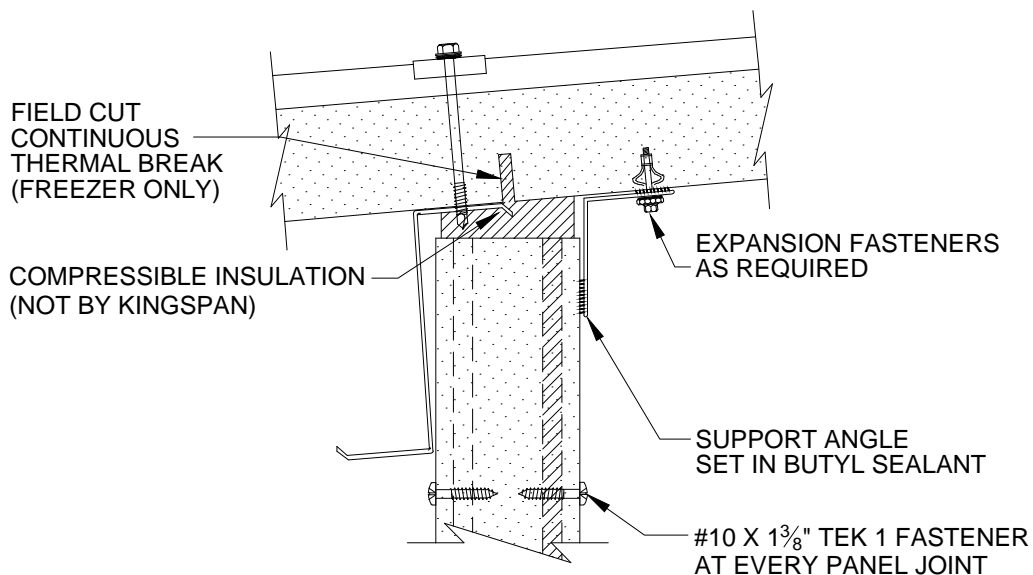
**Kingspan**  
Insulated Panels

[www.kingspanpanels.us](http://www.kingspanpanels.us)  
[www.kingspanpanels.ca](http://www.kingspanpanels.ca)

# KS SERIES - VERTICAL INSTALLATION



## PARTITION TO ROOF (WITH FOAM BLOCKING) (PERPENDICULAR TO PURLIN)



## PARTITION TO ROOF (PARALLEL TO PURLIN)

PARTITION TO ROOF  
WITH BLOCKING

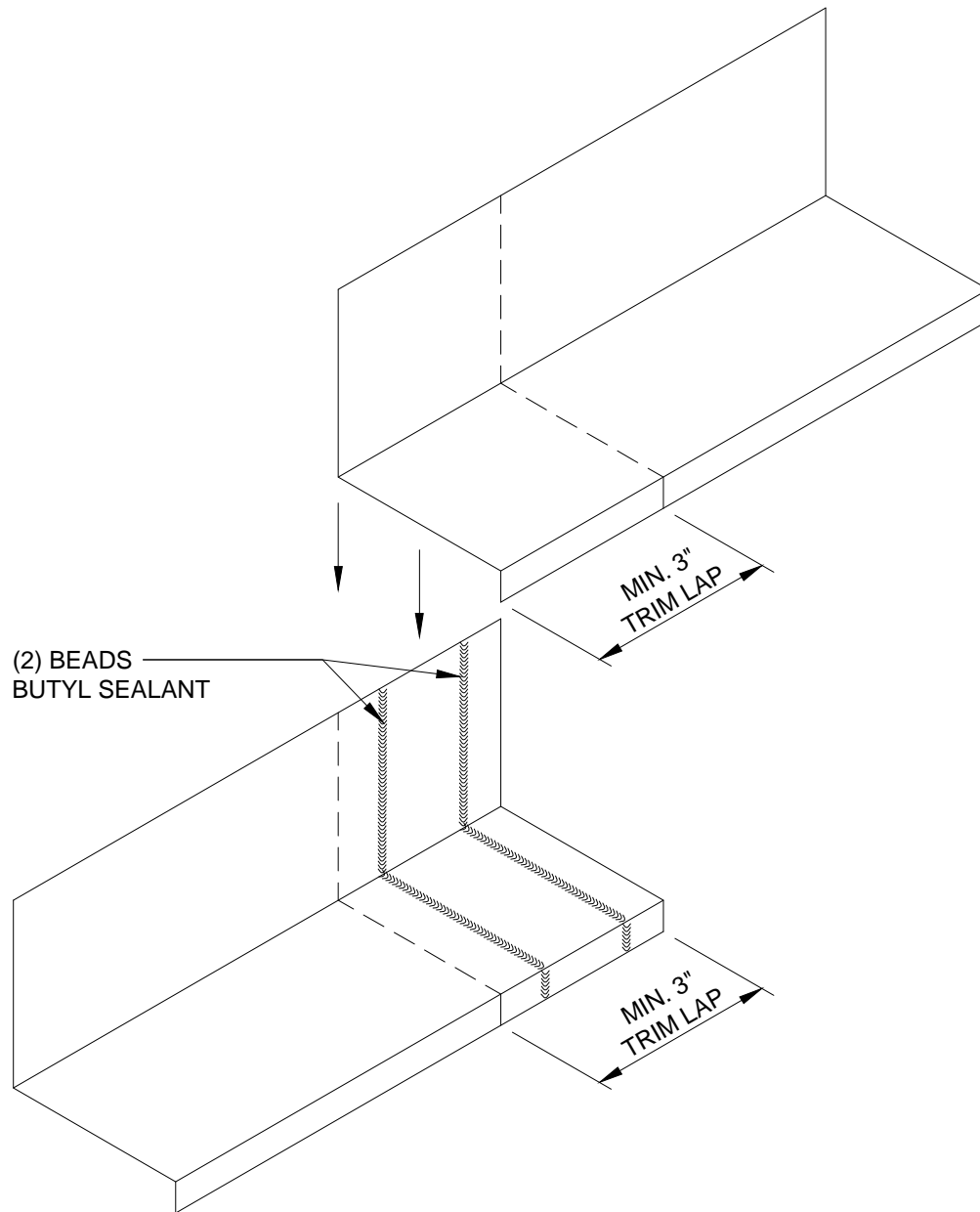
DETAIL #: CS-CE-10-KSV

DATE: 7/26/11

**Kingspan**  
Insulated Panels

[www.kingspanpanels.us](http://www.kingspanpanels.us)  
[www.kingspanpanels.ca](http://www.kingspanpanels.ca)

# KS SERIES - VERTICAL INSTALLATION



TRIM END LAP

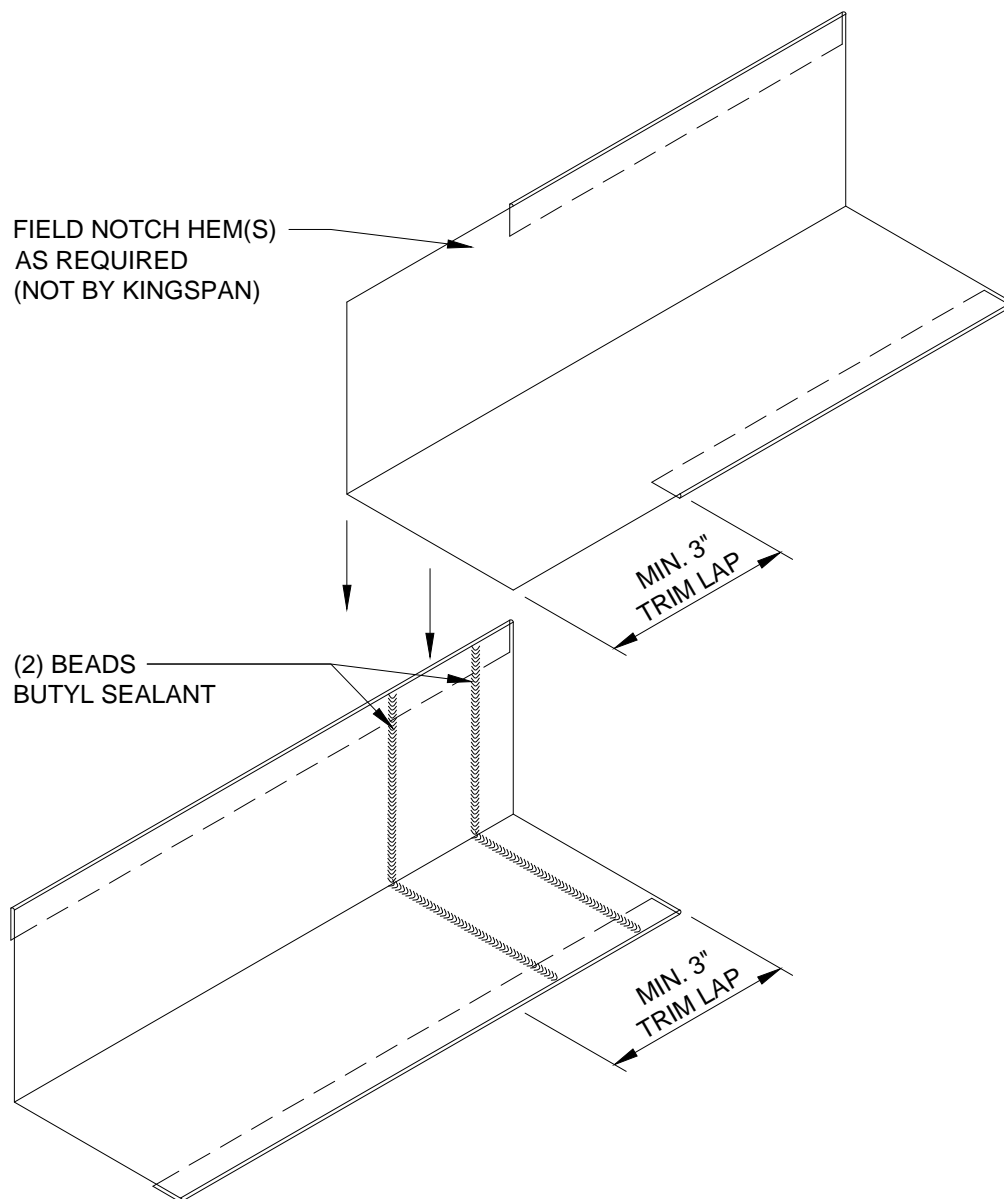
DETAIL #: CS-TL-01-KSV

DATE: 7/26/11

**Kingspan**  
Insulated Panels

[www.kingspanpanels.us](http://www.kingspanpanels.us)  
[www.kingspanpanels.ca](http://www.kingspanpanels.ca)

# KS SERIES - VERTICAL INSTALLATION



TRIM LAP WITH HEM

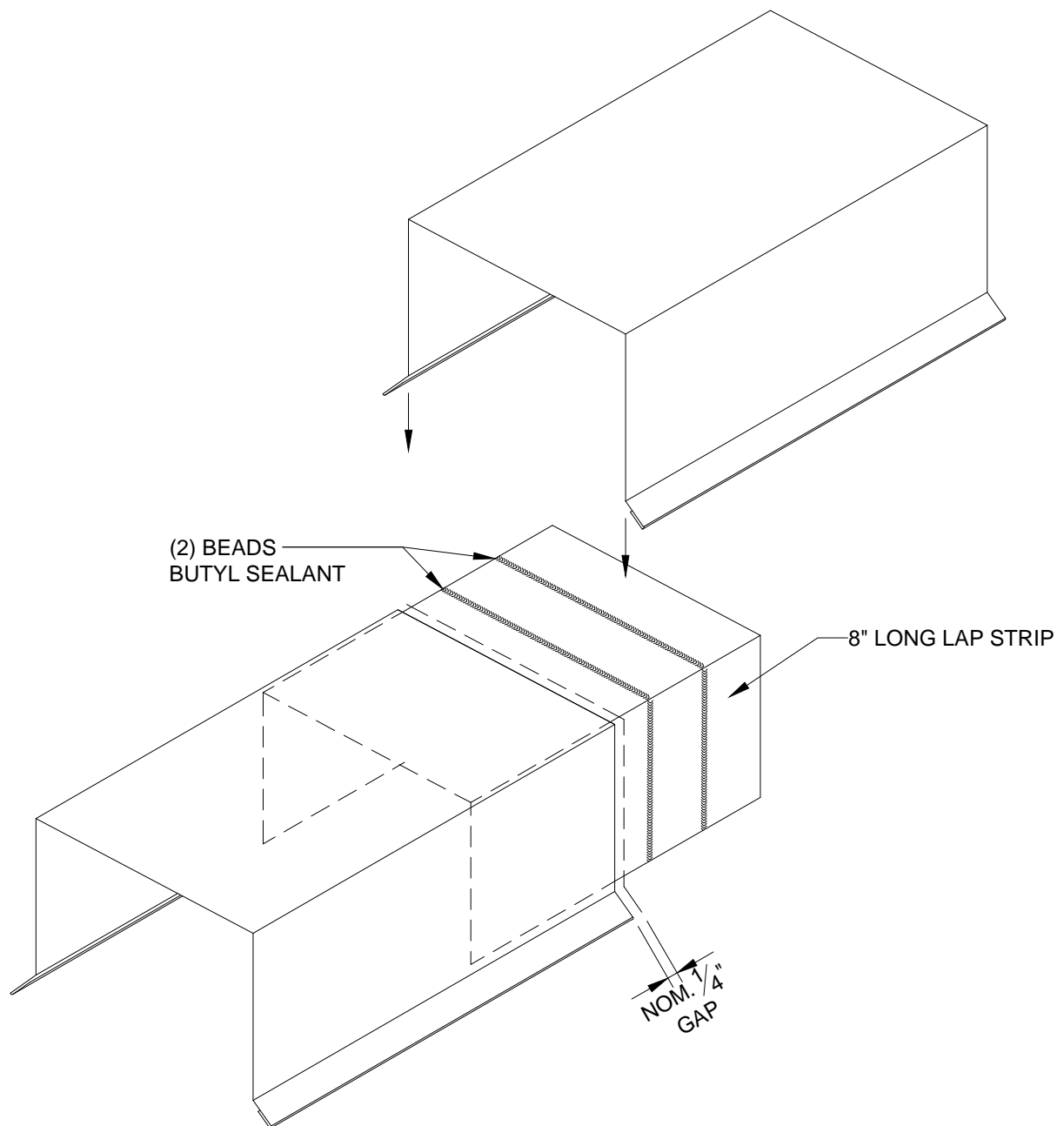
DETAIL #: CS-TL-02-KSV

DATE: 7/26/11

**Kingspan**  
Insulated Panels

[www.kingspanpanels.us](http://www.kingspanpanels.us)  
[www.kingspanpanels.ca](http://www.kingspanpanels.ca)

# KS SERIES - VERTICAL INSTALLATION



TRIM END LAP WITH  
LAP STRIP

DETAIL #: CS-TL-03-KSV

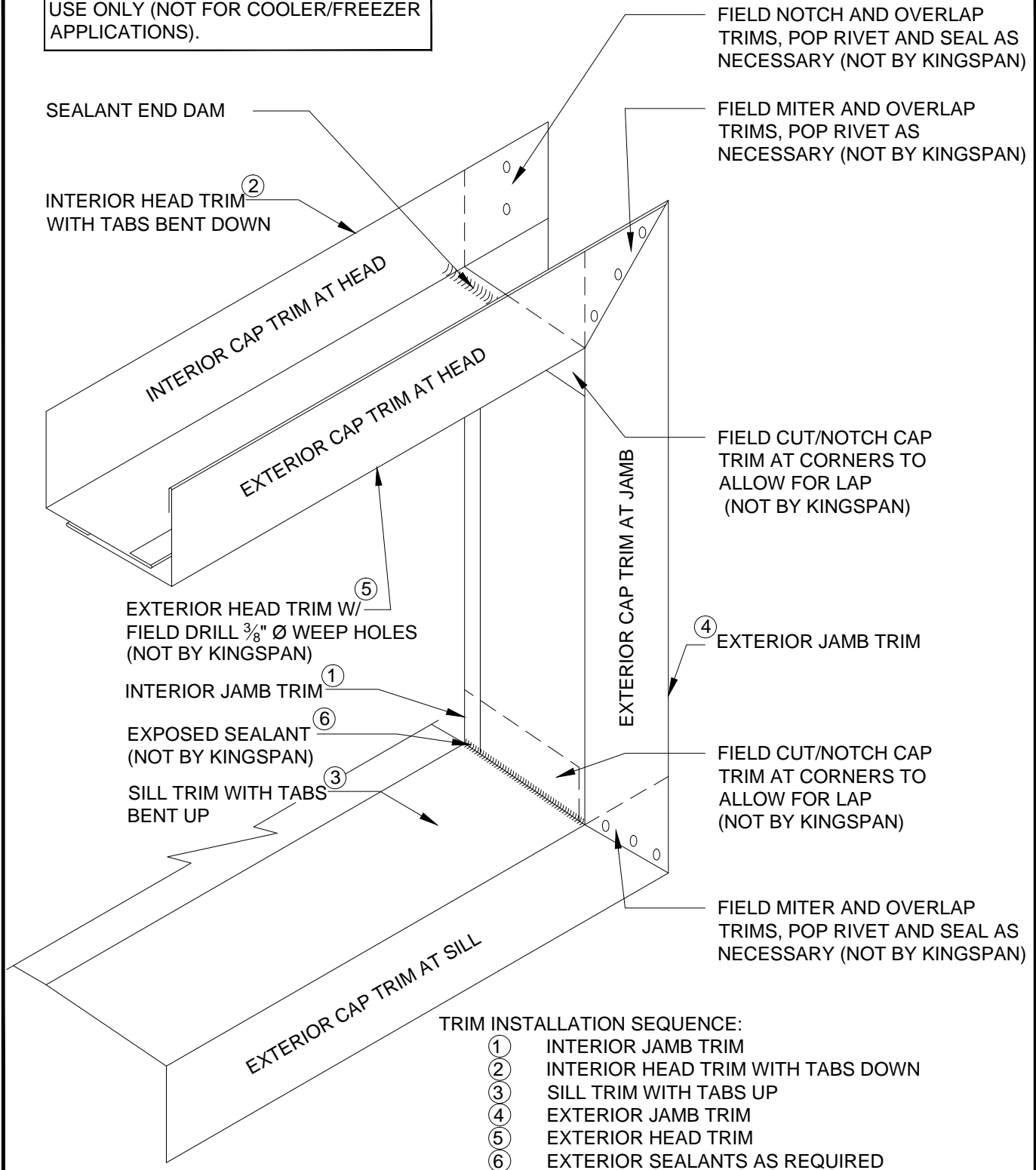
DATE: 7/26/11

**Kingspan**  
Insulated Panels

[www.kingspanpanels.us](http://www.kingspanpanels.us)  
[www.kingspanpanels.ca](http://www.kingspanpanels.ca)

# KS SERIES - VERTICAL INSTALLATION

NOTE: DETAIL SHOWN IS FOR GENERAL USE ONLY (NOT FOR COOLER/FREEZER APPLICATIONS).



TRIM LAP AT  
FRAMED OPENING

DETAIL #: CS-TL-04-KSV

DATE: 7/26/11



www.kingspanpanels.us  
www.kingspanpanels.ca