

MF6RH SERVICE PARTS LIST AND WIRING DIAGRAM

This section contains the Parts Illustrations and Parts Lists for the MF6RH.

A *no number* designation, when used in the part number column, indicates the unit is not available from SCOTSMAN as an assembly. This designation is used only for clarity of division in making the list.

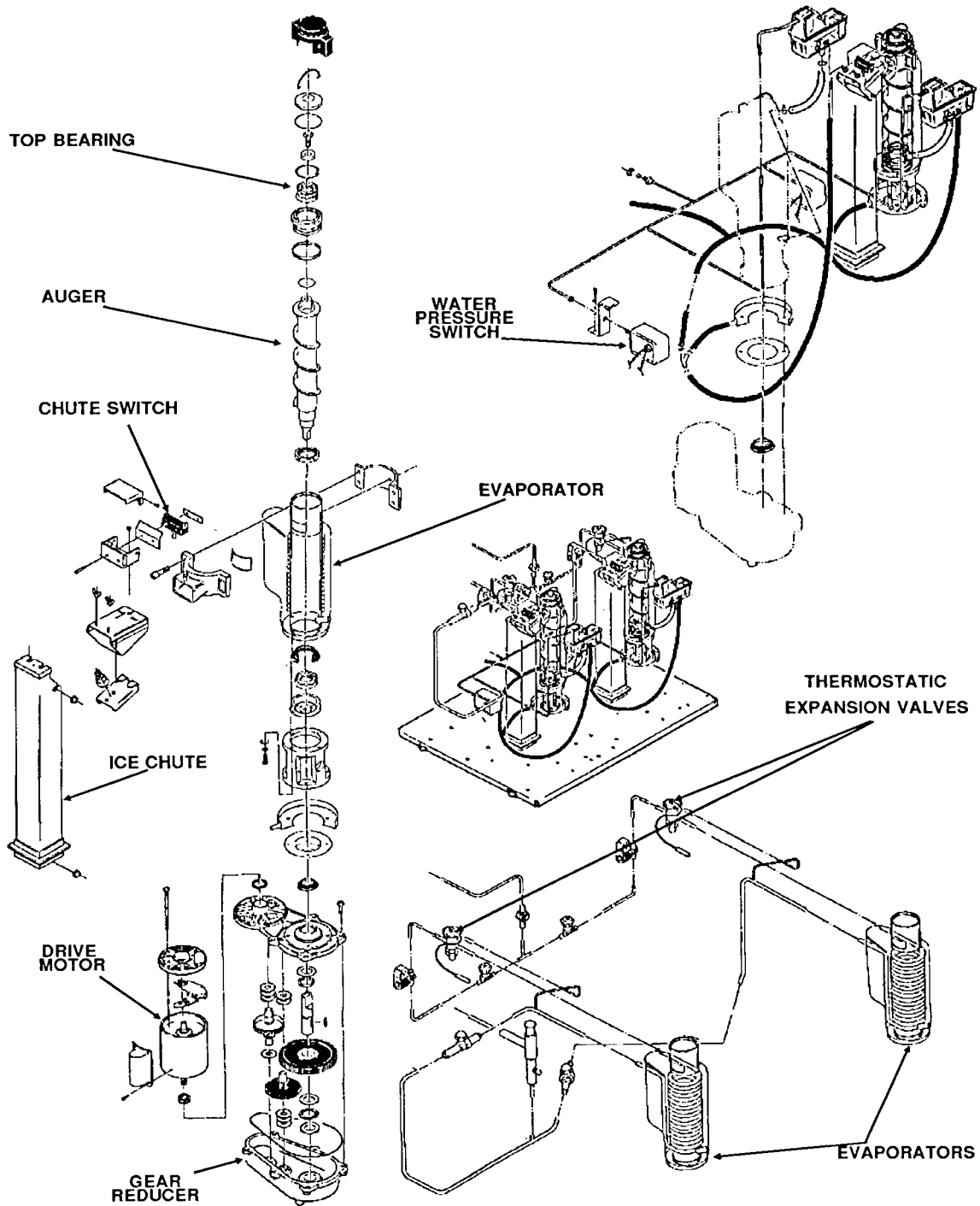
When ordering parts of assemblies, to avoid costly delays and errors, give the part number, the description, and quantity of each part or assembly required.

The wiring diagram for the ice machine has also been included in this section.

Table Of Contents

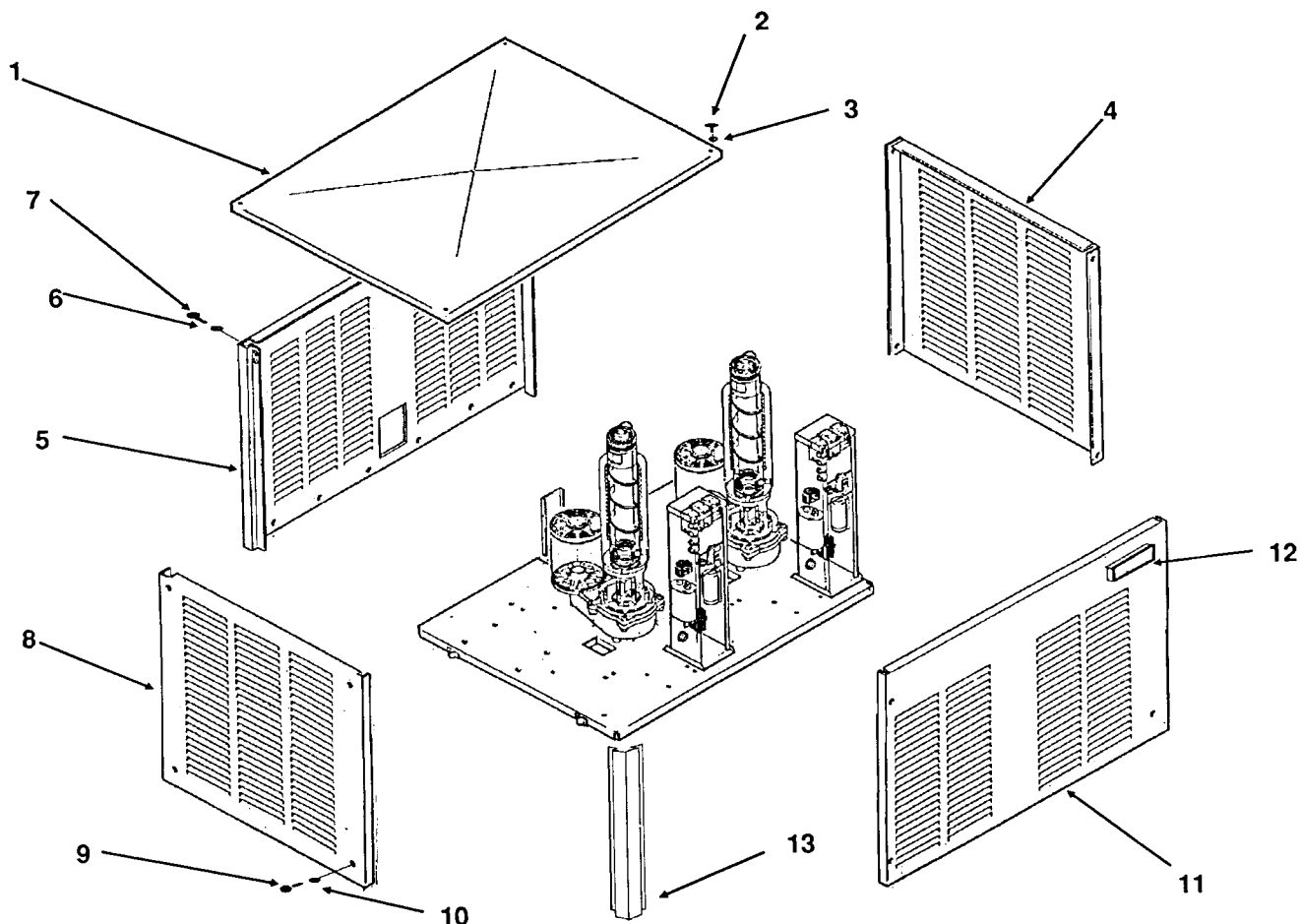
Panels.....	Page 3
Water System.....	Page 4
Refrigeration	Page 5
Freezer.....	Page 6
Ice Chute	Page 7
Control Box.....	Page 8
Gear Motor	Page 9
Wiring Diagram.....	Page 10

MF6RH SERVICE PARTS



MF6RH SERVICE PARTS

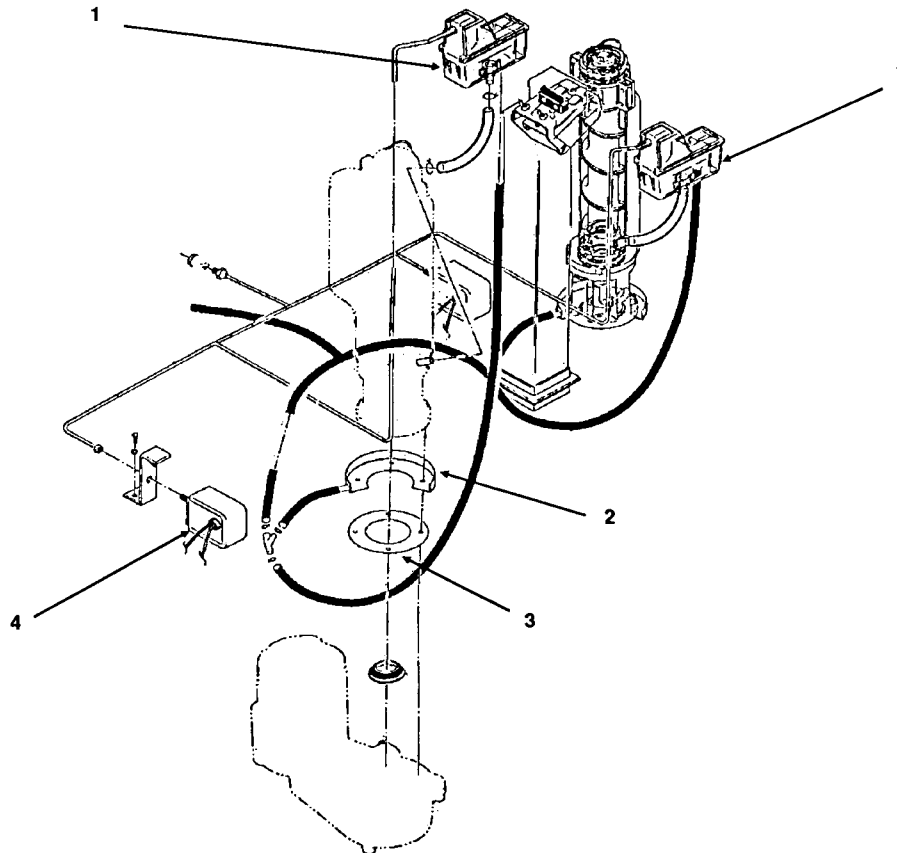
PANELS



Item Number	Part Number	Description	Item Number	Part Number	Description
1	A30672-001	Top Panel	8	A30668-001	Left Side Panel
2	03-1404-10	Panel Screw	9	03-1417-03	Washer
3	03-1417-03	Washer	10	03-01404-19	Panel Screw
4	A30688-001	Right Side Panel	11	A30667-001	Front Panel
5	A30669-001	Back Panel	12	15-0711-01	Emblem
6	03-1417-09	Washer	13	A30674-001	Corner Post
7	03-0571-00	Panel Screw			

MF6RH SERVICE PARTS

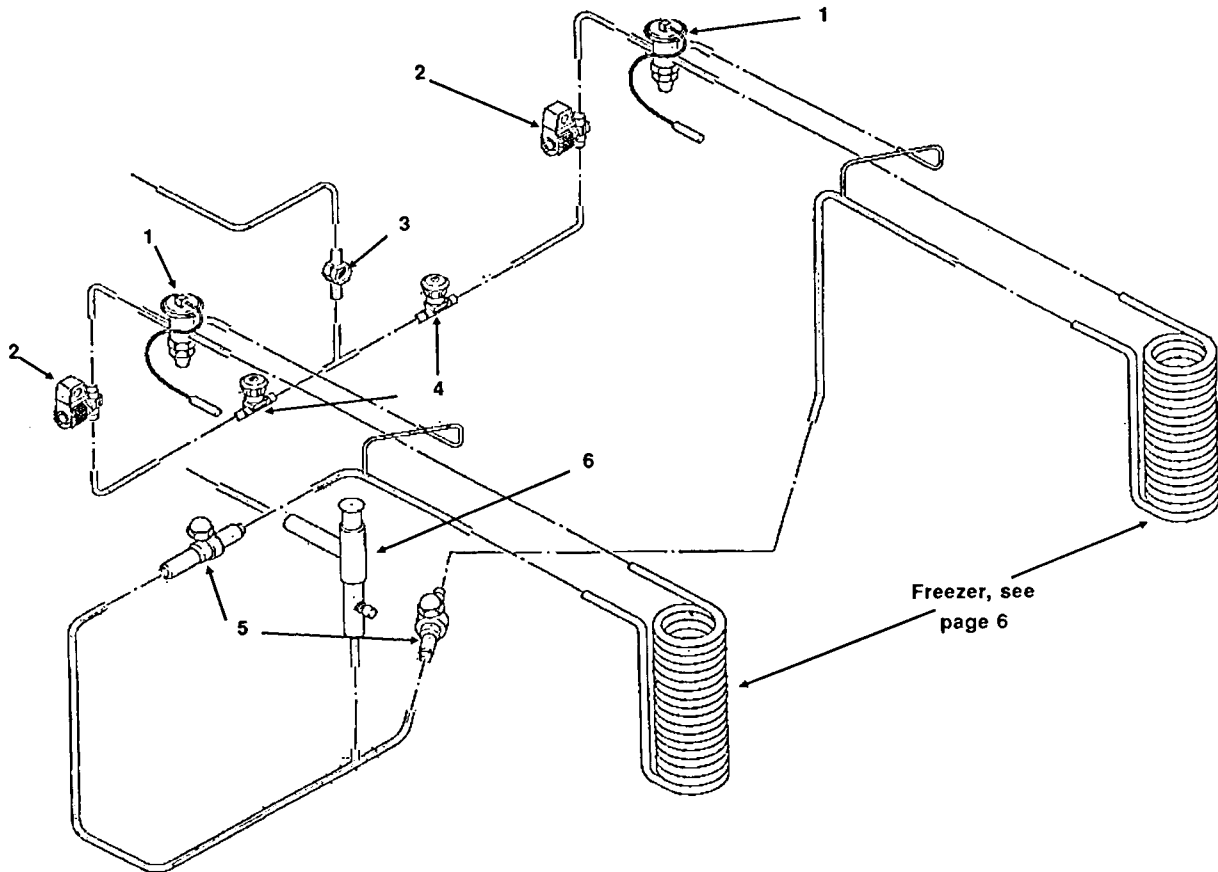
WATER SYSTEM



Item Number	Part Number	Description
1	02-2217-01	Reservoir
2	A21290-000	Drip Pan
3	13-0704-00	Gasket
4	11-0296-00	Water Pressure Switch

MF6RH SERVICE PARTS

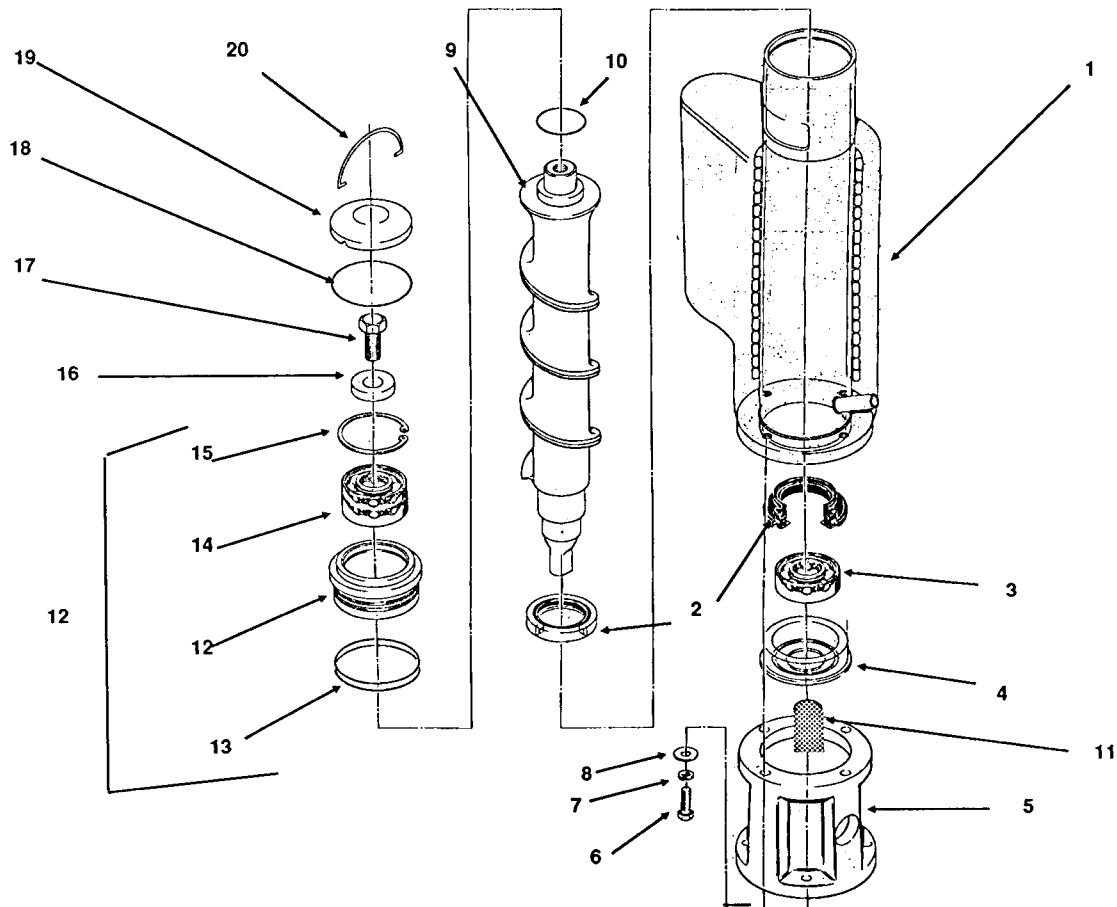
REFRIGERATION



Item Number	Part Number	Description
1	A32860-001	Valve, TXV
2	A32857-001	Valve, Liquid Line
3	16-0762-02	Sight Glass
4	A32858-001	Valve, Shut Off
5	A32855-001	Ball Valve
6	A32859-001	Valve, EPR

MF6RH SERVICE PARTS

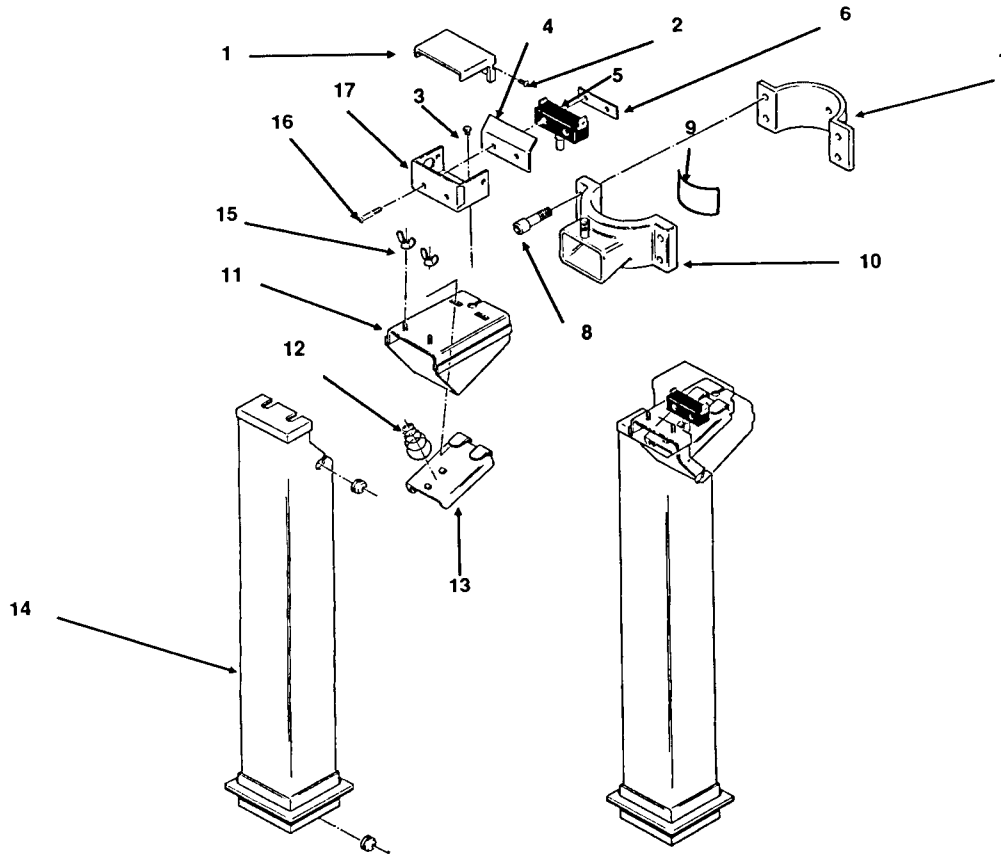
FREEZER



Item Number	Part Number	Description	Item Number	Part Number	Description
1	A32424-020	Evaporator	12	A26708-001	Bearing Retainer Includes Items 12-14
2	02-0929-01	Water Seal	13	03-0617-40	O-ring
3	02-0619-00	Bottom Bearing	14	02-0646-00	Top Bearing
4	A10591-000	Bearing Retainer	15	03-1558-04	Snap Ring
5	02-1629-00	Adapter	16	A06273-000	Washer
6	03-1420-03	Screw	17	03-1405-36	Screw
7	03-1408-04	Washer	18	13-0617-20	O-ring
8	03-1410-04	Washer	19	A08581-000	Cap
9	A29467-001	Auger	20	A08582-000	Hook
10	03-0617-15	O-ring			
11	15-0573-01	Coupling			

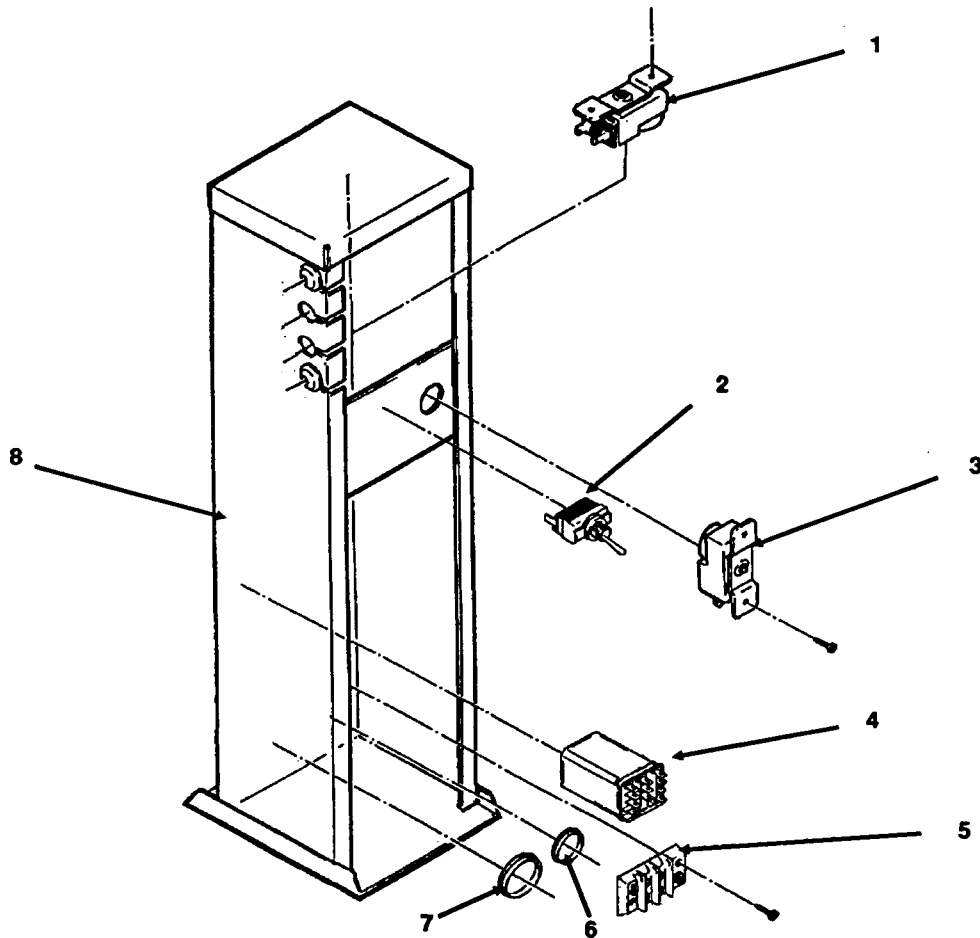
MF6RH SERVICE PARTS

ICE CHUTE



Item Number	Part Number	Description	Item Number	Part Number	Description
1	A14241-000	Cover	10	A30783-001	Spout Casting
2	No Number	Screw	11	A30830-001	Spout
3	A14256-000	Nut	12	02-1312-00	Spring
4	No Number	Insulation	13	A16353-000	Pressure Plate & Spring
5	12-1018-01	Switch	14	A30785-001	Ice Chute
6	03-1544-03	Speed Nut	15	03-1587-02	Wing Nut
7	A24928-001	Spout Plate	16	03-1403-08	Screw
8	03-1544-03	Screw	17	A14976-000	Limit Box
9	02-1437-00	Gasket			

MF6RH SERVICE PARTS CONTROL BOX



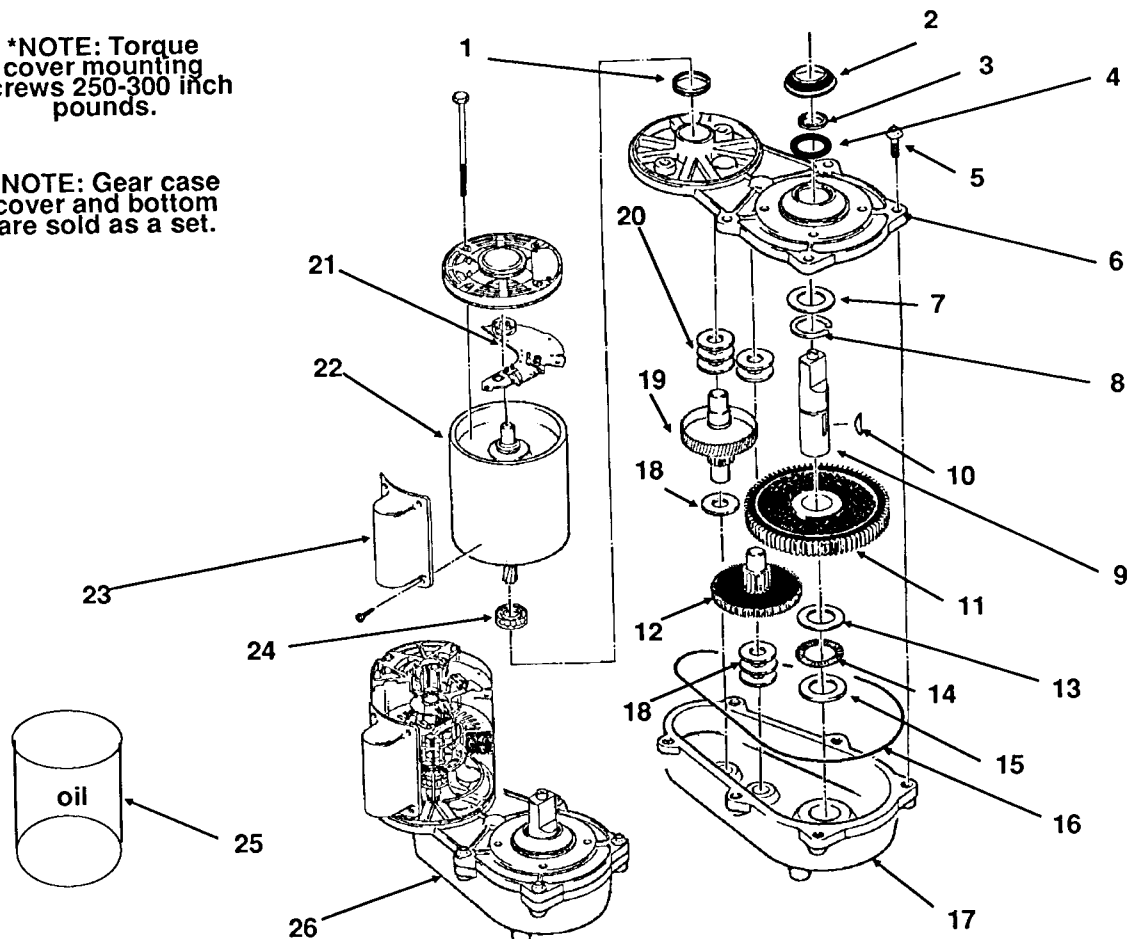
ITEM NUMBER	PART NUMBER	DESCRIPTION
1	11-0412-03	Thermostat
2	12-0426-01	Switch
3	11-0354-00	Bin Thermostat
4	12-2090-05	Relay
5	12-0813-04	Terminal Board
6	12-1213-10	Snap Bushing
7	12-1213-12	Snap Bushing
8	no number	Control Box

MF6RH SERVICE PARTS

GEAR MOTOR

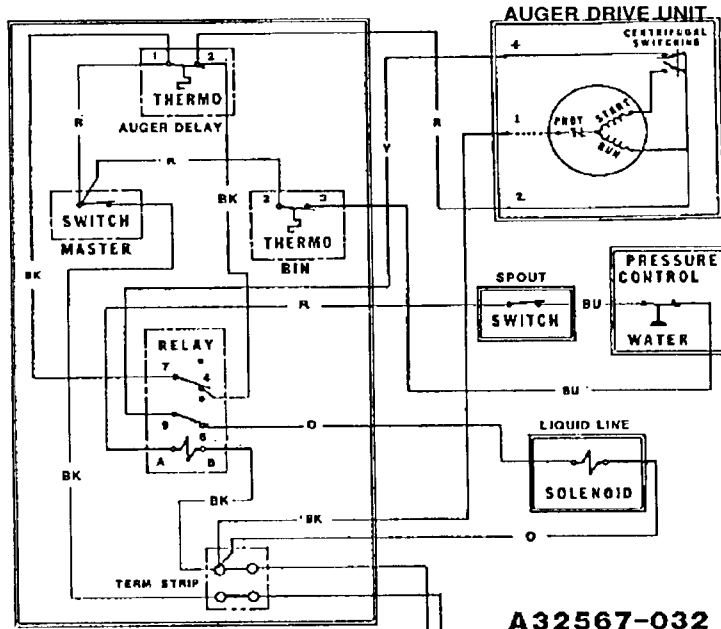
*NOTE: Torque cover mounting screws 250-300 inch pounds.

*NOTE: Gear case cover and bottom are sold as a set.



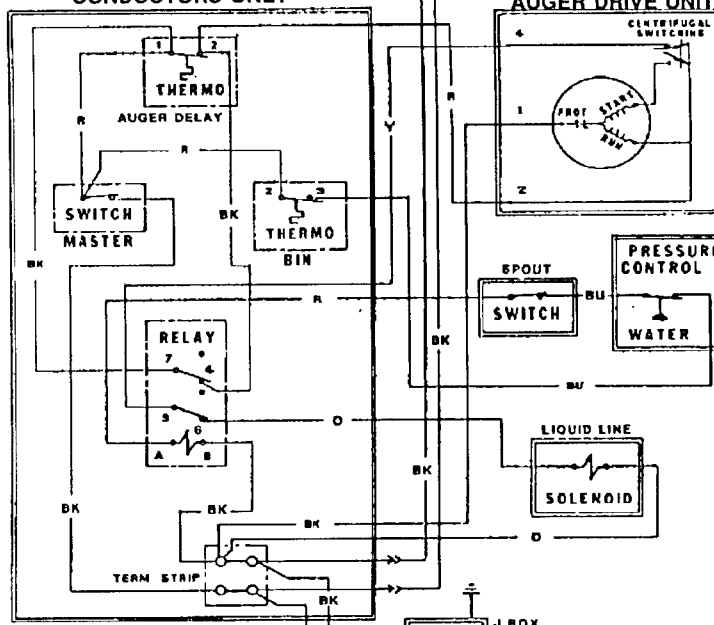
Item Number	Part Number	Description	Item Number	Part Number	Description
1	02-1606-00	Oil Seal	14	A32368-020	Bearing
2	13-0709-02	Water Shed	15	02-1679-00	Thrust Race
3	02-2853-01	Upper Oil Seal	16	A26103-001	O-ring
4	02-1607-01	Lower Oil Seal	17	A31230-001	Gearcase Bottom*
5	03-1251-01	Screw	18	03-1408-24	Washer
6	A31230-001	Gearcase Cover*	19	02-2072-00	1st Gear, 2nd Pinion
7	02-1681-00	Thrust Race	20	03-1408-24	Washer
8	03-1363-00	Retaining Ring	21	12-2314-21	Centrifugal Switch
9	02-1652-00	Output Shaft	22	A32425-022	Drive Motor, 220v.
10	03-1364-00	Key	23	12-2314-23	Capacitor
11	02-1653-00	Output Gear	24	12-1741-29	Bearing
12	02-2071-01	2nd Gear, 3rd Pinion	25	A25835-001	Oil
13	02-1681-00	Thrust Race	26	A32402-022	Complete Gear Reducer

MF6RH WIRING DIAGRAM



A32567-032

USE COPPER CONDUCTORS ONLY



THIS UNIT MUST BE GROUNDING

ALL CONTROLS SHOWN IN NORMAL ICE MAKING MODE

SEE NAMEPLATE FOR SUPPLY VOLTAGE AND MAX FUSE SIZE

